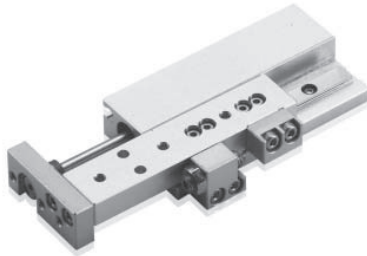


PSW Series

Features



- High linear motion with precise cross roller guide
- High solidity structure which is not need extra external guide
- Positioning holes for attachment (3 places) supplied
- Slim, simple, and compact appearance with desugb by guide unit and cylinder in parallel
- Great allowable moment in small size (improved basic rated load by 4 sides contact)
- Diversity in installation and application
- Used for feeding, Pusher, Up Down, and positioning in the assembling of precision component and semiconductor industry

Order Form



PSW 08 - 10 - B3 S

① ② ③ ④ ⑤

- ① Series
 ②, ③ Bore size & Stroke(mm)

②Name	Bore size(mm)	③Stroke(mm)
06	6	5, 10, 15, 20
08	8	5, 10, 20, 30
12	12	10, 20, 30, 40, 50

- Product specification reference table (●mark means possible to mount)

Specification	Auto Switch mounting	Stopper mounting (Standard mounting - forward stage)
Model		
PSW06	●	●
PSW08	●	●
PSW12	●	●

- ④ Auto Switch type

Symbol	Type	Length
B3	PLC PRO-B3 (3-wire)	1m
B3L		3m

- ⑤ Auto Switch quantity

Blank	2ea
S	1ea

• For the change of stopper adjustment unit and modification related to Auto Switch, please contact us separately.

Specification

Model	PSW06				PSW08				PSW12						
Bore size(mm)	6				8				12						
Rod(mm)	3				4				6						
Stroke(mm)	5	10	15	20	5	10	20	30	10	20	30	40	50		
Theoretical thrust(kgf)	Forward		0.28 × P				0.5 × P				1.13 × P				
	Backward		0.21 × P				0.37 × P				0.84 × P				
P : Air pressure(kgf/cm ²)															
Air port size	M3				M3				M5						
Main body weight(kgf)	0.11	0.12	0.13	0.14	0.13	0.14	0.16	0.17	0.27	0.31	0.37	0.41	0.47		
Max. load(kgf)	0.3				0.5				1.2						
Fluid	Clean air Note 1)														
Air pressure(kgf/cm ²)	1.5 ~ 7 (General resistance pressure: 10.5) Note 2)														
Lubrication	No need (if need, use one sort of turbine oil: SPEC ISOVG 32)														
Cushion	Urethane Stopper														
Temperature(°C)	5 ~ 60														
Motion speed	50 ~ 500 mm/sec														
Stroke allowable tolerance in forward(mm)	0 ~ + 1														
Motion type	Double-acting type														
Accuracy(mm)	±0.01														

Note 1) Clean air: Fresh air containing solid matters with 0.3% of supersaturated moisture and 99.9% of liquid oil that passed through the 3~10 μ m degree of filtering
 Note 2) Guaranteed capacity of resist pressure: A pressure that does not cause an abnormality in parts when it is applied for 1 minute without any weight loaded.