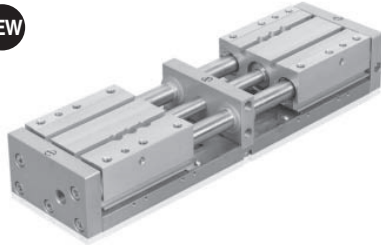


PH23 Series

Features

NEW



- Wide and Parallel operating type General hand.
- Maximized solidity with applying a Sliding Guide.
- Excellent small-size, light weight, generated with ultra slim type
- Possible to handle various range of workpieces with long stroke.
- High gripping force with double thrust
- Auto Switch for the detection of position can be attached

Order form

PH23 - 20 - W - P S - PNP

① ② ③ ④ ⑤ ⑥

③, ④ Auto Switch type

③ Name	④ Switch Name	Switch Type	Length	Applied Cylinder
W	P	DC 3-wire proximity sensor (body Length 32mm)	2m	ø 20, ø 25 ø 30, ø 40 ø 60
	P2	DC 3-wire proximity sensor (body Length 16mm)		
S	A2	DSC 2-wire	1m	ø 20, ø 25 ø 30, ø 40
	A2L	Magnetic sensor	3m	
	B2	PLC 3-wire	1m	
	B2L	Magnetic sensor	3m	

* Only proximity sensor selectable for PH23-60 (Cannot select magnetic sensor for this item)

① Series

② Bore size & Stroke

Name	Bore size(mm)	Stroke(mm)
20	20	80
25	25	100
30	30	130
40	40	180
60	60	200

⑤ Auto Switch quantity

Blank	2ea
S	1ea

⑥ Output of Proximity Sensor

Name	Output
Blank	NPN type
PNP	PNP type

Specification

Model	PH23-20	PH23-25	PH23-30	PH23-40	PH23-60
Bore size(mm)	20×2	25×2	30×2	40×2	63×2
Stroke(mm)	80	100	130	180	200
Gripping force(kgf) Air pressure(5kgf/cm ²) <small>Note 1)</small>	17.6	28.3	37.9	79	225
Air port size	M5	PT1/8			
Main body weight(kgf)	2.8	4	7.5	11.3	17.3
Allowable length of attachment L(mm) <small>Note 2)</small>	80	100	160	200	300
Fluid	Clean air <small>Note 3)</small>				
Air pressure(kgf/cm ²)	3 ~ 7				
Lubrication	No need (if need, use one sort of turbine oil: SPEC ISOVG 32)				
Temperature(°C)	5 ~ 60				
Accuracy(mm)	±0.15				
Maximum operating speed(mm/sec) <small>Note 4)</small>	150	150	130	100	60
Motion type	Double-acting type (Structure: Parallel open & close by Rack & Pinion) (Guide: Linear Guide)				
Tolerance of open & close stroke(mm)	Open: -1 ~ +1.5, Close: -1.5 ~ +1				

Note 1) The position of gripping point for gripping force is the end point of the finger.

Note 2) For the base point of tolerable length and displacement in attachment, refer to page 48.(Tolerable value with 5kgf/cm² of Air pressure.)

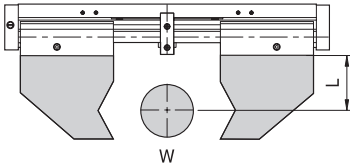
Note 3) Clean air: Fresh air containing solid matters with 0.3% of supersaturated moisture and 99.9% of liquid oil that passed through the 3~10 μ m degree of filtering

Note 4) It is reference value of Master Jaw's operating speed when the pipe length is 1m, the length of internal diameter is ø4 and operating pressure is 6.5kgf/cm².



▶ Refer to page 49 for how to read the graph.

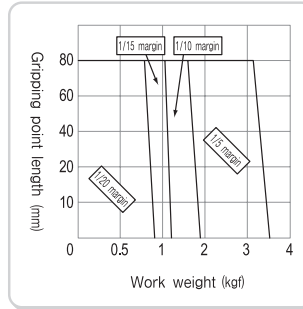
WORK outer diameter gripping force graph



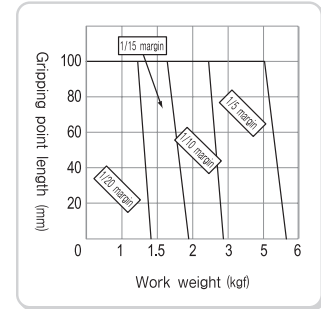
Outer diameter gripping state

W: Work weight
L: Gripping point length

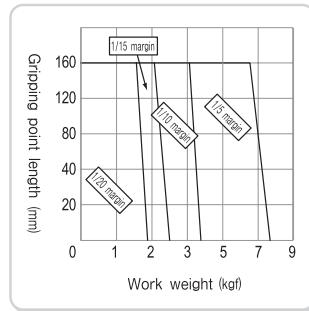
◆PH23-20



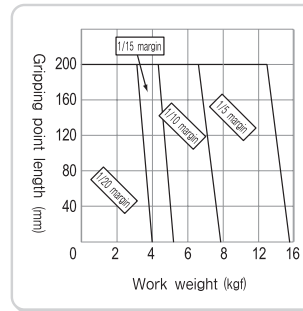
◆PH23-25



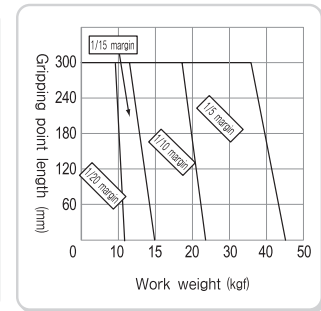
◆PH23-30



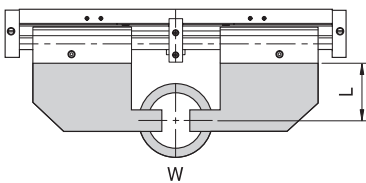
◆PH23-40



◆PH23-60



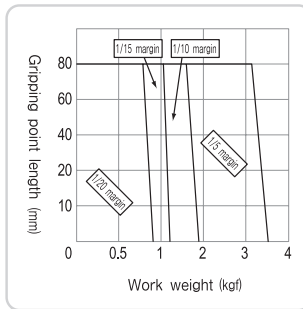
WORK inner diameter gripping force graph



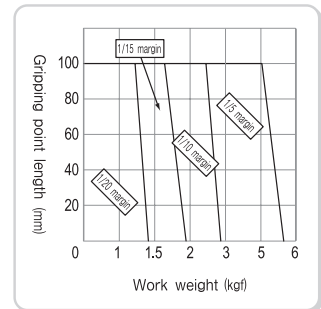
Inner diameter gripping state

W: Work weight
L: Gripping point length

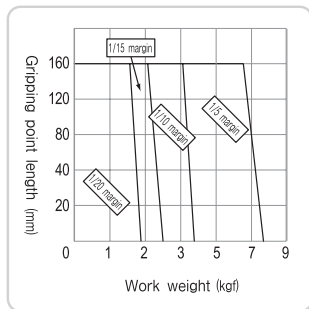
◆PH23-20



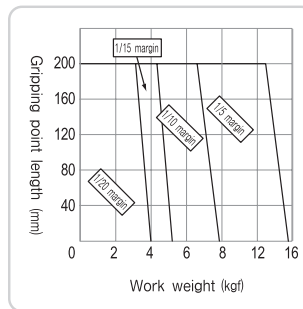
◆PH23-25



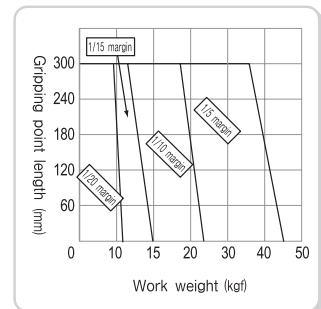
◆PH23-30



◆PH23-40



◆PH23-60



⚠ Caution

If using the attachment longer than allowable length as specified in the graph, it may have an adverse effect on the guide and cause problem to durability. Always use the gripping force within the specified length.

PH23 Series

20

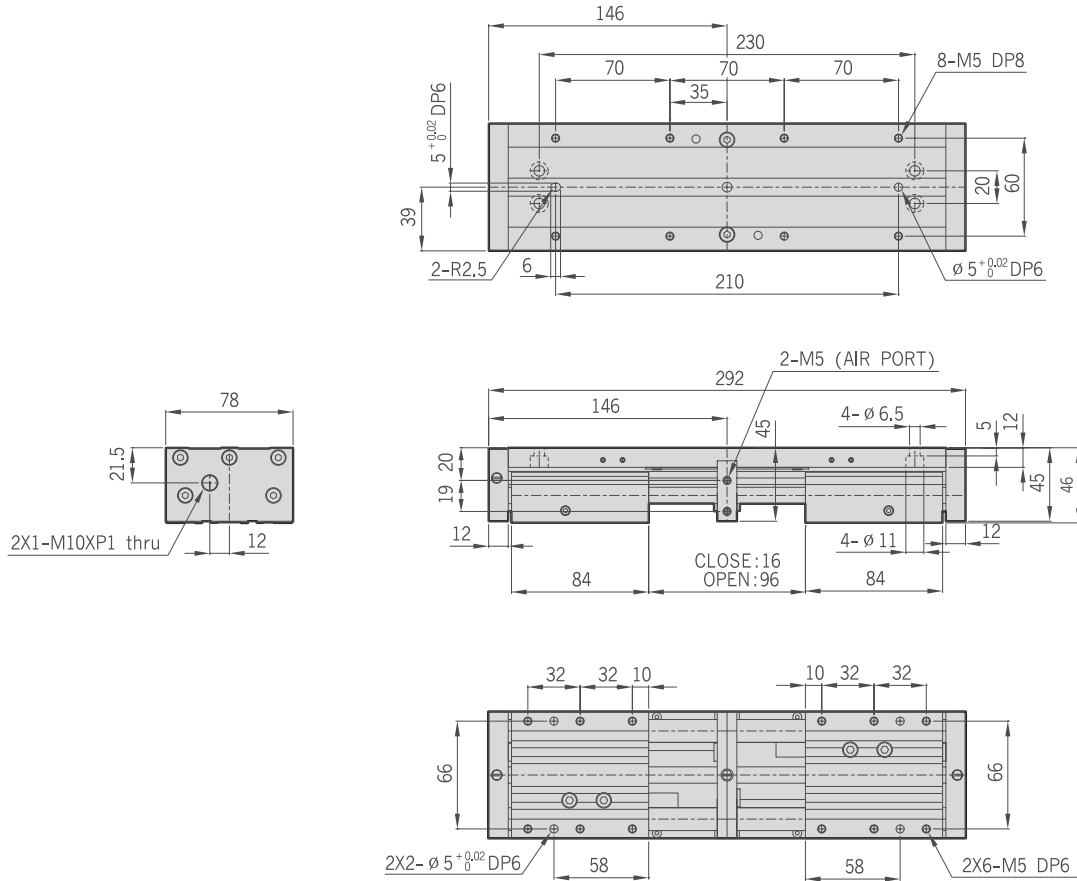
25

30

40

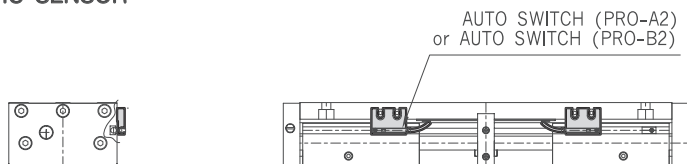
60

PH23-20

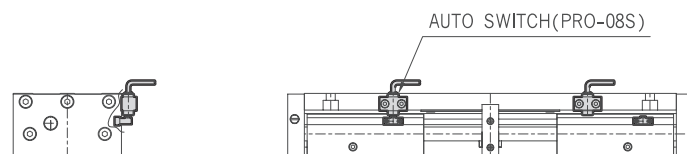


PH23-20-Auto Switch

PH23-20-S MAGNETIC SENSOR



PH23-20-W PROXIMITY SENSOR



20

25

30

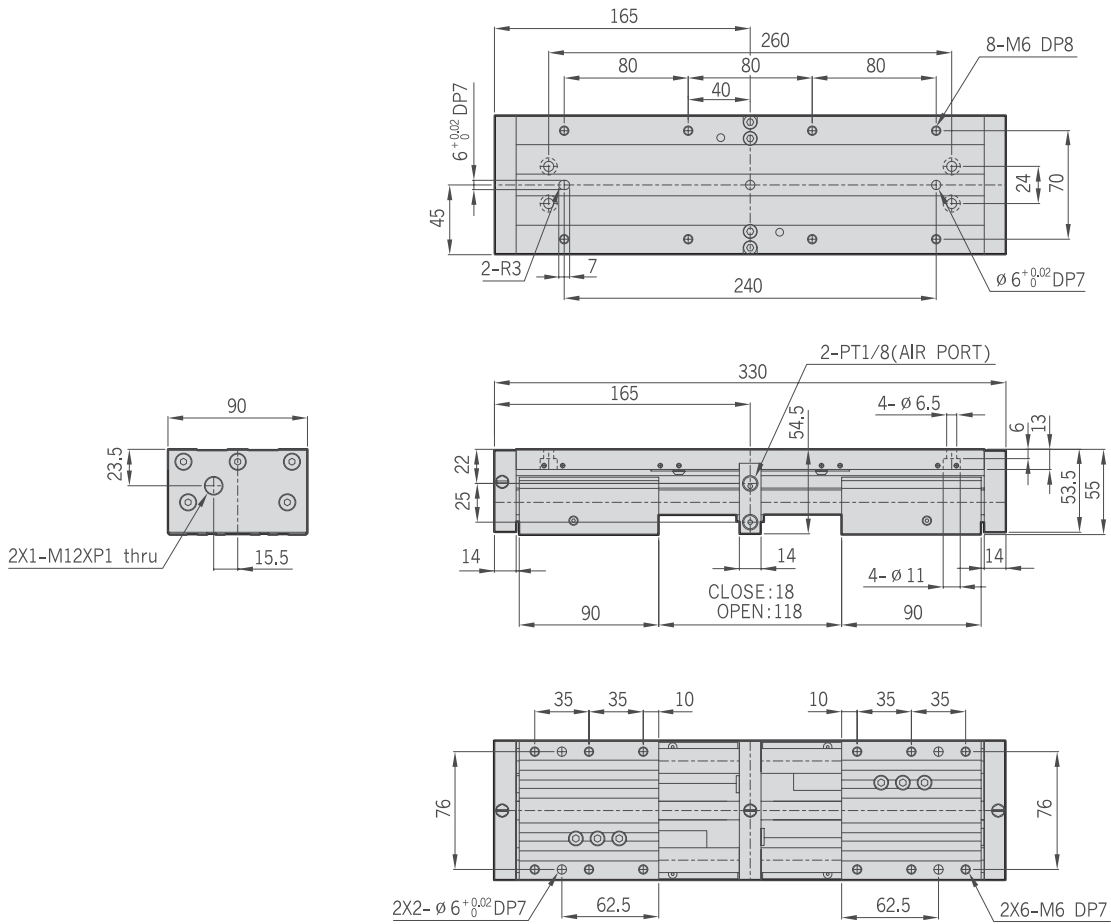
40

60

PH23-25

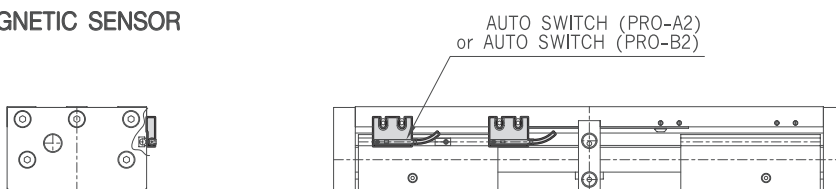
HAND

- PH01-A
- PH01-D
- PH01-G
- PH01K
- PH01K-C
- PH02
- PH04
- PH05
- PH06
- PH06-L
- PH07
- PH08
- PH09
- PH12
- PH14-S
- PH15-S
- PH21
- PH22
- PH23

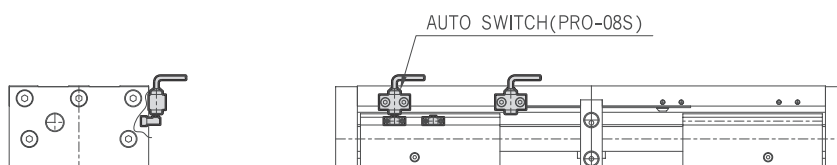


PH23-25-Auto Switch

PH23-25-S MAGNETIC SENSOR



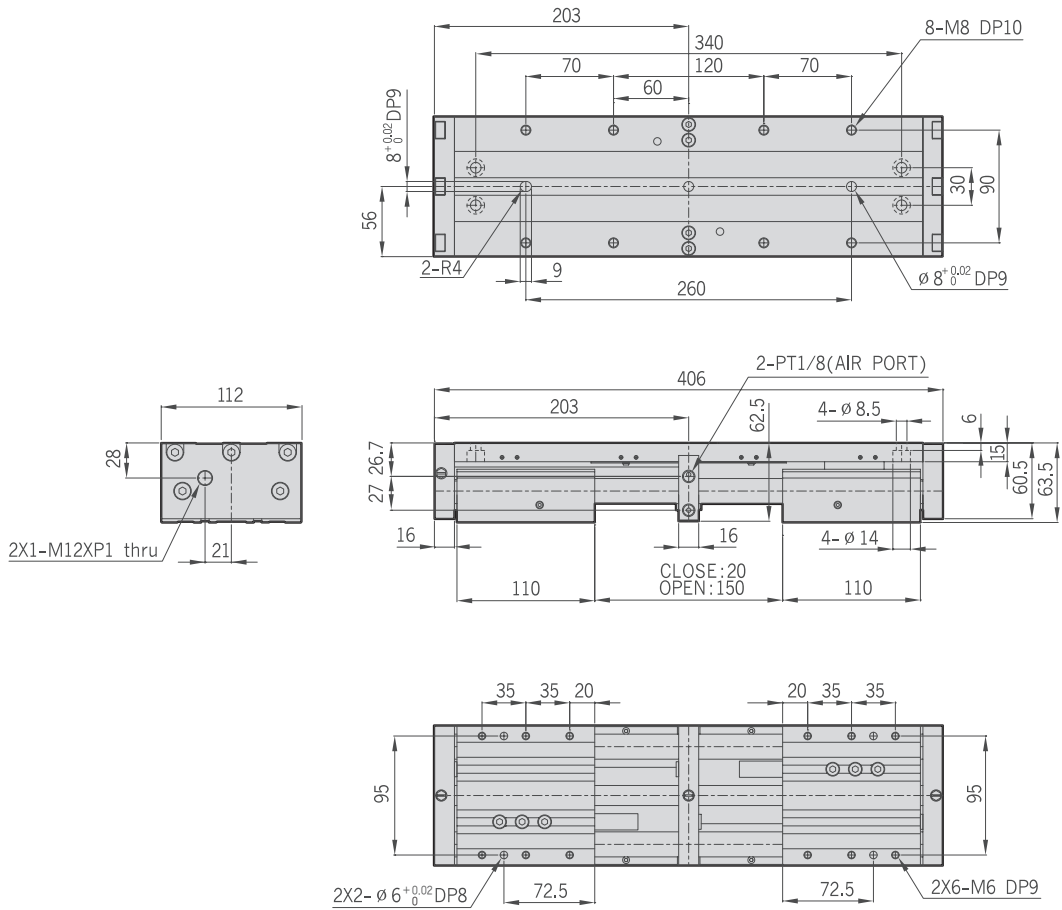
PH23-25-W PROXIMITY SENSOR



PH23 Series

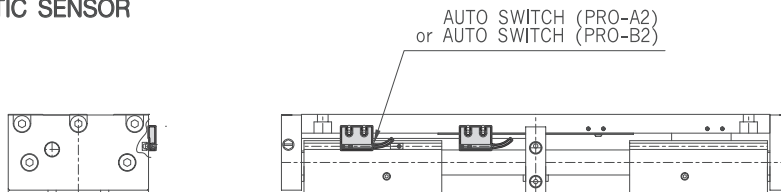
20 25 **30** 40 60

PH23-30

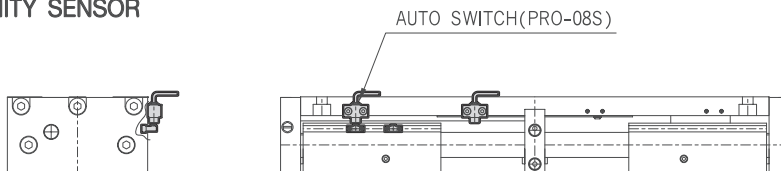


PH23-30-Auto Switch

PH23-30-S MAGNETIC SENSOR



PH23-30-W PROXIMITY SENSOR



20

25

30

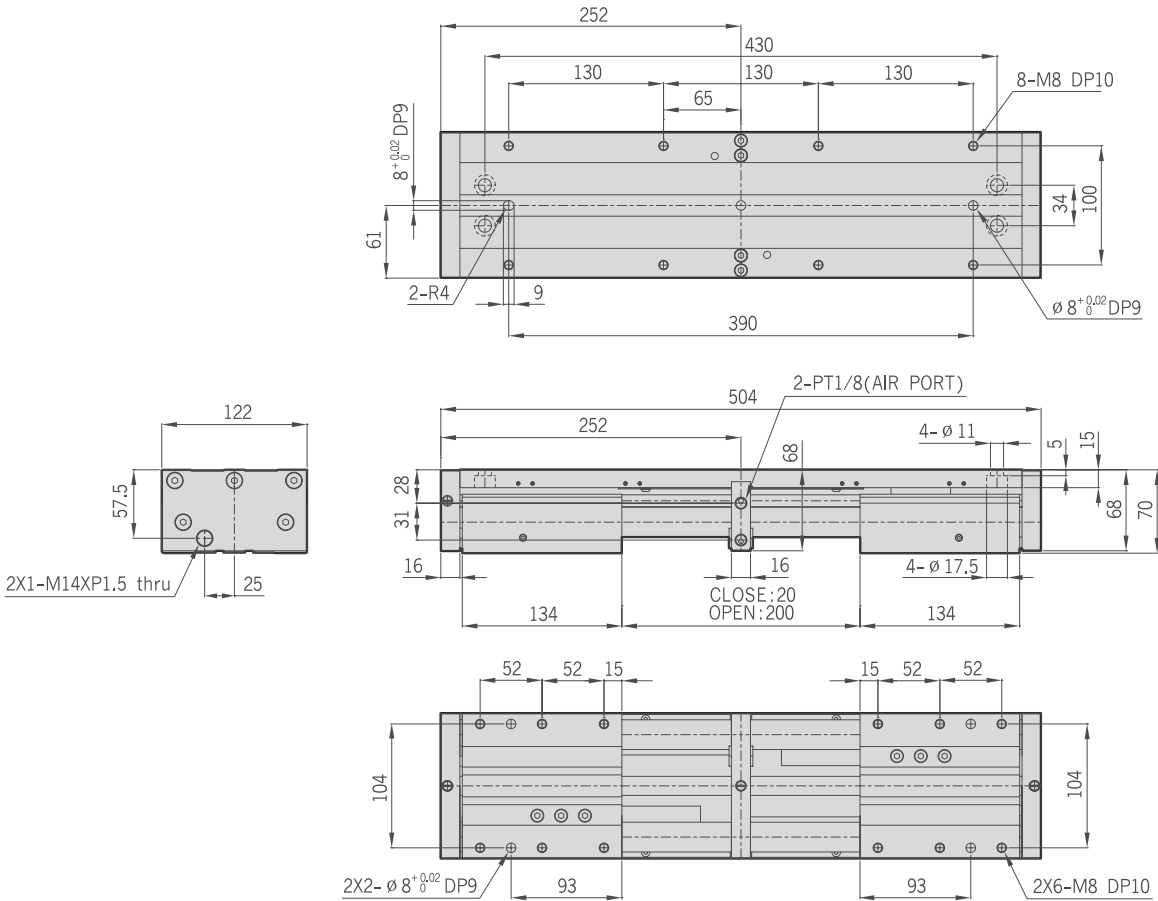
40

60

PH23-40

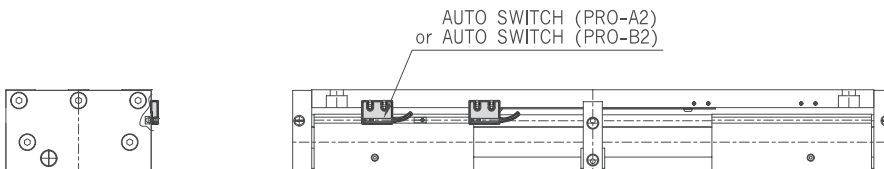
HAND

- PH01-A
- PH01-D
- PH01-G
- PH01K
- PH01K-C
- PH02
- PH04
- PH05
- PH06
- PH06-L
- PH07
- PH08
- PH09
- PH12
- PH14-S
- PH15-S
- PH21
- PH22
- PH23**

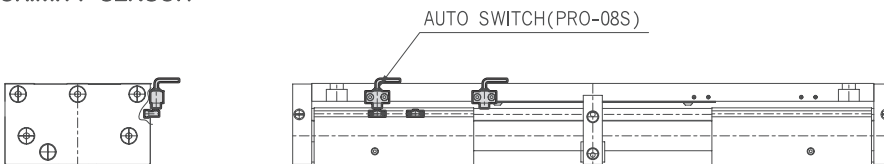


PH23-40-Auto Switch

PH23-40-S MAGNETIC SENSOR



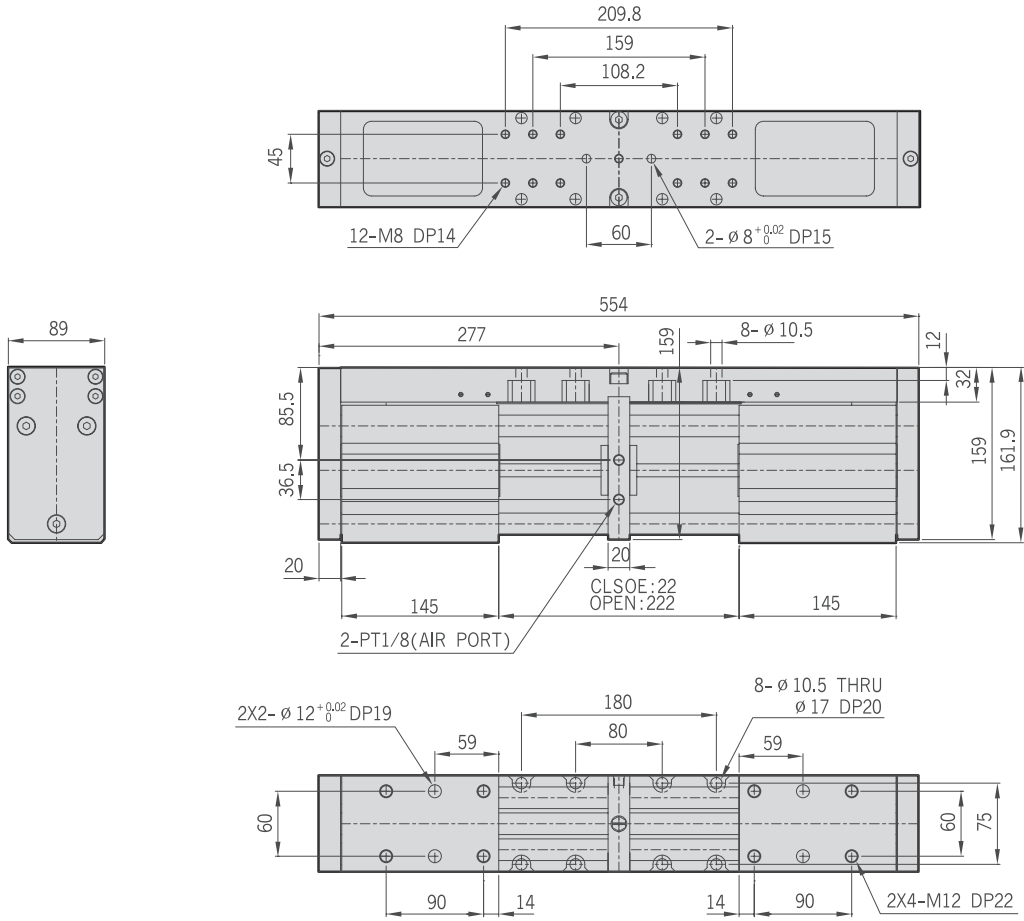
PH23-40-W PROXIMITY SENSOR



PH23 Series

20 25 30 40 60

PH23-60



PH23-60-Auto Switch

