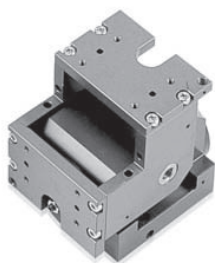


## SWIVEL UNIT

# ASU-N Series

### Features



- Combination unit equipped with rotary type swivel unit by Rack & Pinion
- Can make Auto loader structure with 90° reverser actuator which can combine with 2 sets of general hand.
- Lightweight suitable for assembled with small robot.
- Auto Switch for the detection of position can be attached.

### Order Form

**ASU 22N - P S - PNP**

①      ②      ③   ④      ⑤

① Series

② Bore size

Name	Bore size(mm)
18N	18
22N	22
30N	30
40N	40
50N	50
60N	60

③ Auto Switch type

Blank	None
P	Distance proximity type(3-wire, 2m)

⑤ Output of Proximity Sensor

Symbol	Output
Blank	NPN type
PNP	PNP type

④ Auto Switch quantity

Blank	2ea
S	1ea

### Specification

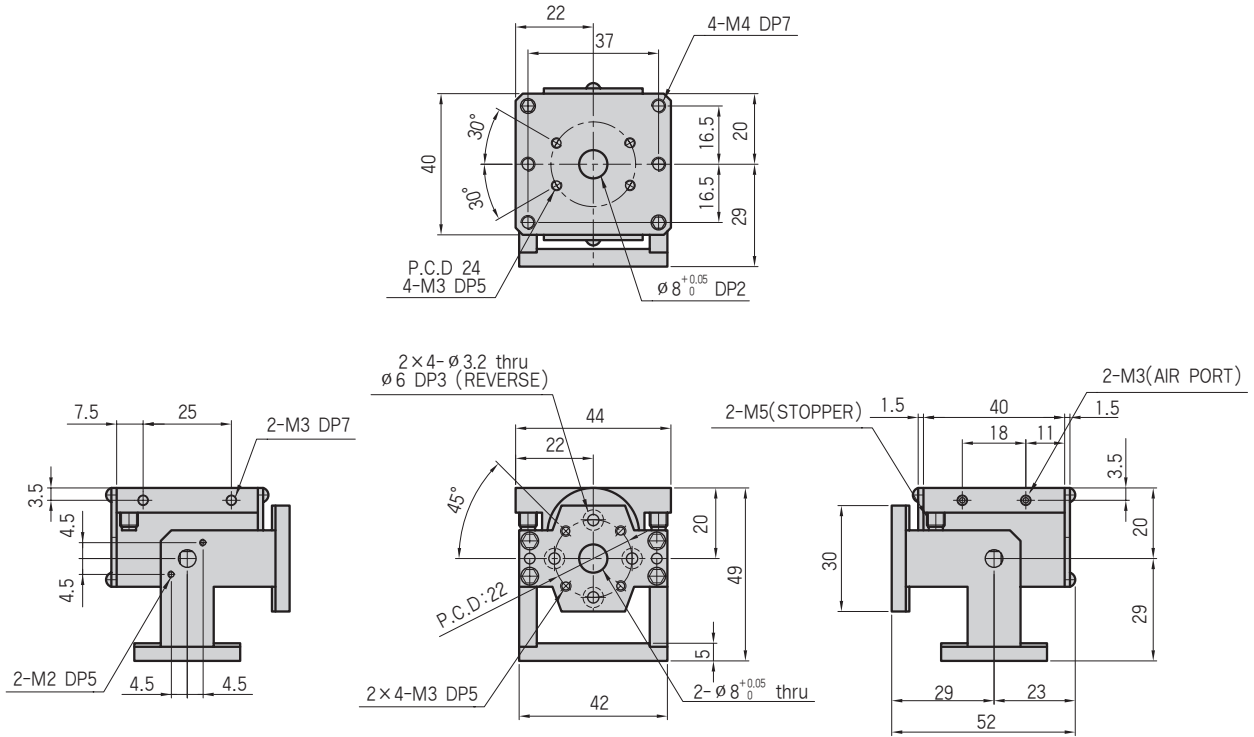
Model	ASU18N	ASU22N	ASU30N	ASU40N	ASU50N	ASU60N
Rotation angle(°)	90					
Cushion specification	Urethane damper			Air Cushion		Shock Absorber
Rotation time(sec/90°)	0.2 ~ 0.7	0.2 ~ 0.8	0.3 ~ 1.0	0.4 ~ 1.2	0.5 ~ 1.5	0.7 ~ 2.0
Effective torque(kgf · cm) <small>Note 2)</small>	0.7 × P	1.3 × P	3.7 × P	7.7 × P	15.1 × P	45.8 × P
Main body weight(kgf)	0.13	0.20	0.85	1.33	1.95	9.8
Air port size	M3	M5	M5	M5	PT1/8	PT1/8
Maximum radial load(kgf)	3.7	5.6	11	16	24	61.5
Maximum thrust load(kgf)	0.7	1.1	2.4	3.3	4	12.3
Allowable energy(kgf · cm)	0.06	0.1	4.1	9.2	11.4	32
Fluid	Clean air <small>Note 1)</small>					
Air pressure(kgf/cm <sup>2</sup> )	3 ~ 7					
Lubrication	No need (if need, use one sort of turbine oil: SPEC ISOVG 32)					
Temperature(°C)	5 ~ 60					
Rotary tip angle adjustable clearance(°)	±3					

Note 1) Clean air: Fresh air containing solid matters with 0.3% of supersaturated moisture and 99.9% of liquid oil that passed through the 3~10 $\mu$ m degree of filtering

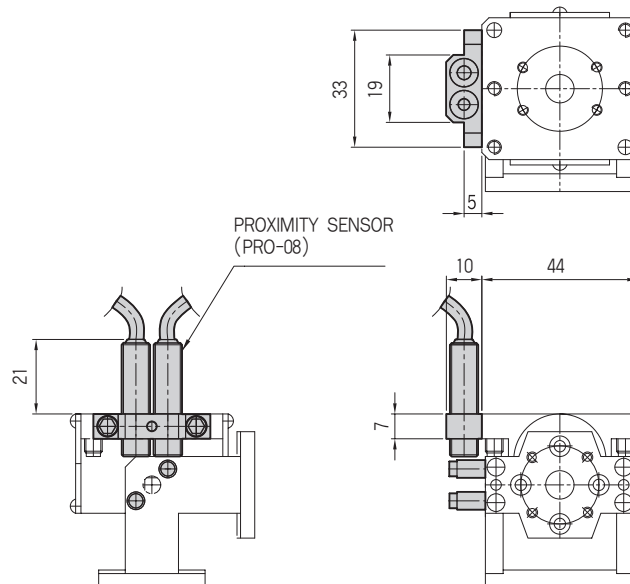
Note 2) P: Air pressure(kgf/cm<sup>2</sup>)

※ For detailed model selection method, please refer to page 580.

## ASU18N



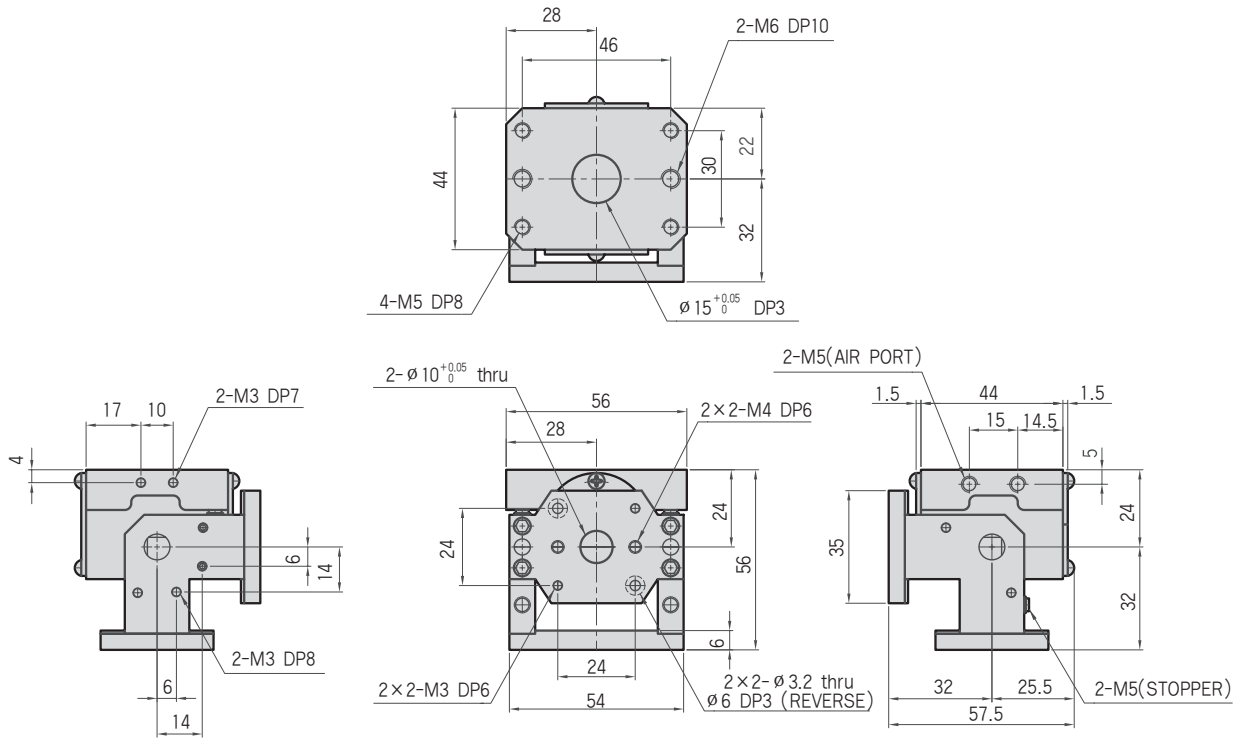
## ASU18N-Auto Switch



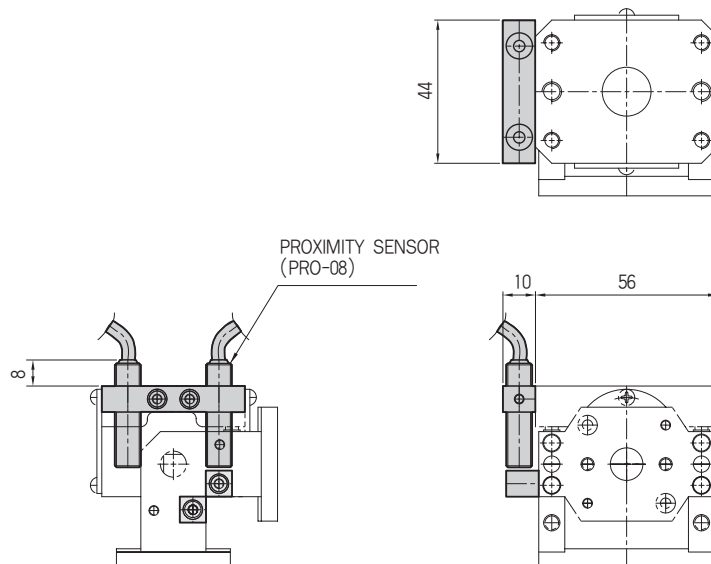
# ASU-N Series

18 22 30 40 50 60

## ASU22N

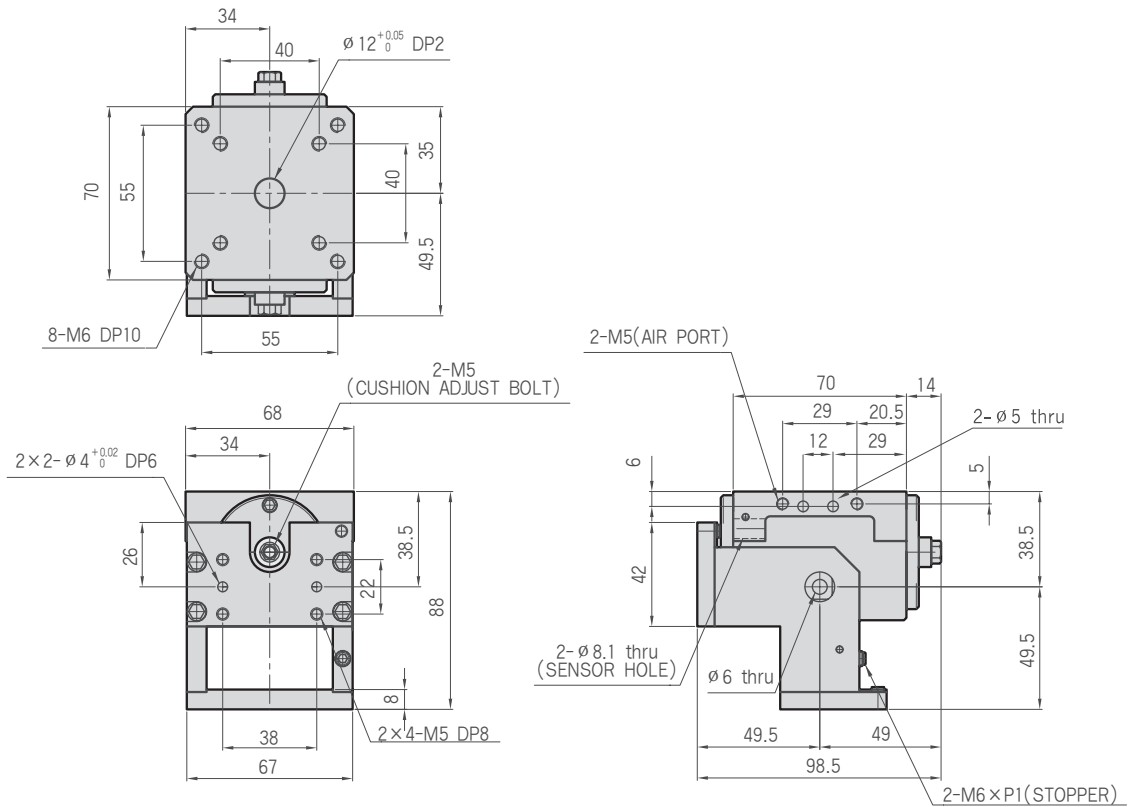


## ASU22N-Auto Switch

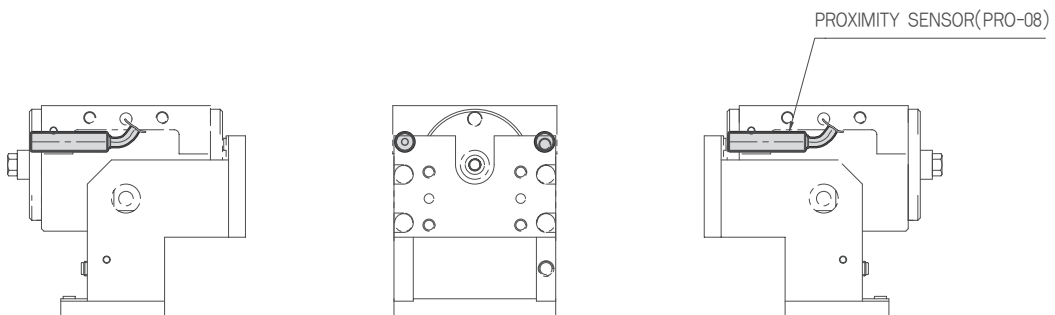


18 22 **30** 40 50 60

ASU30N



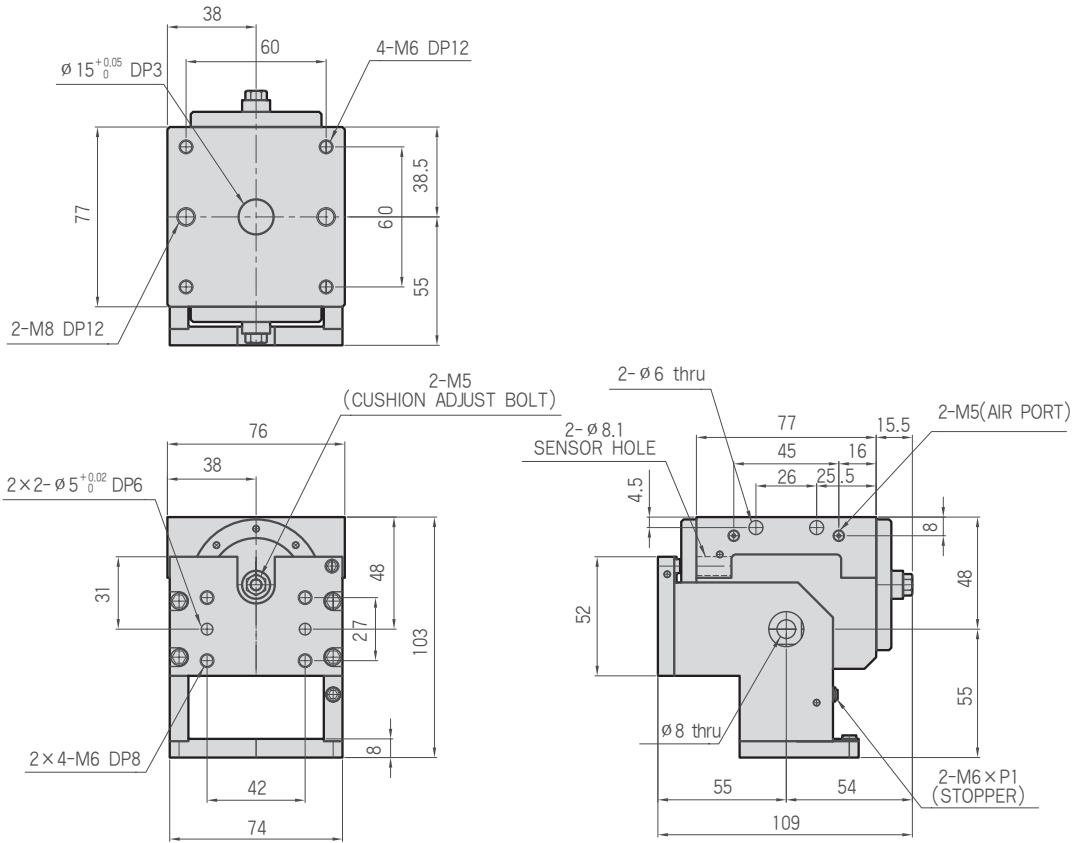
ASU30N-Auto Switch



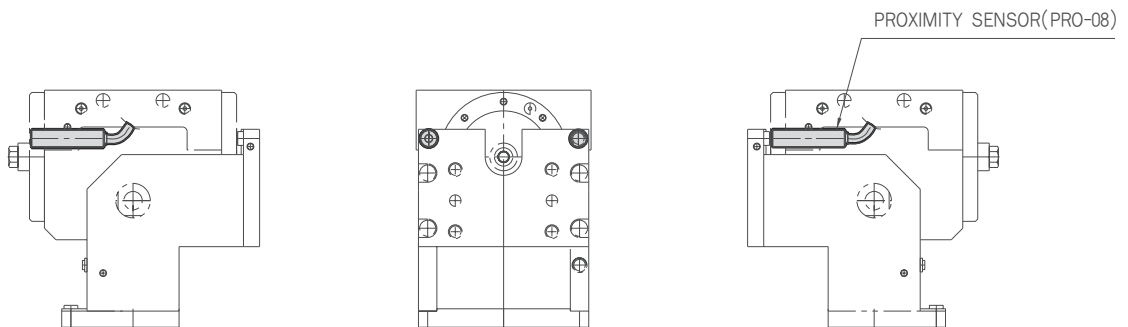
# ASU-N Series

18 22 30 **40** 50 60

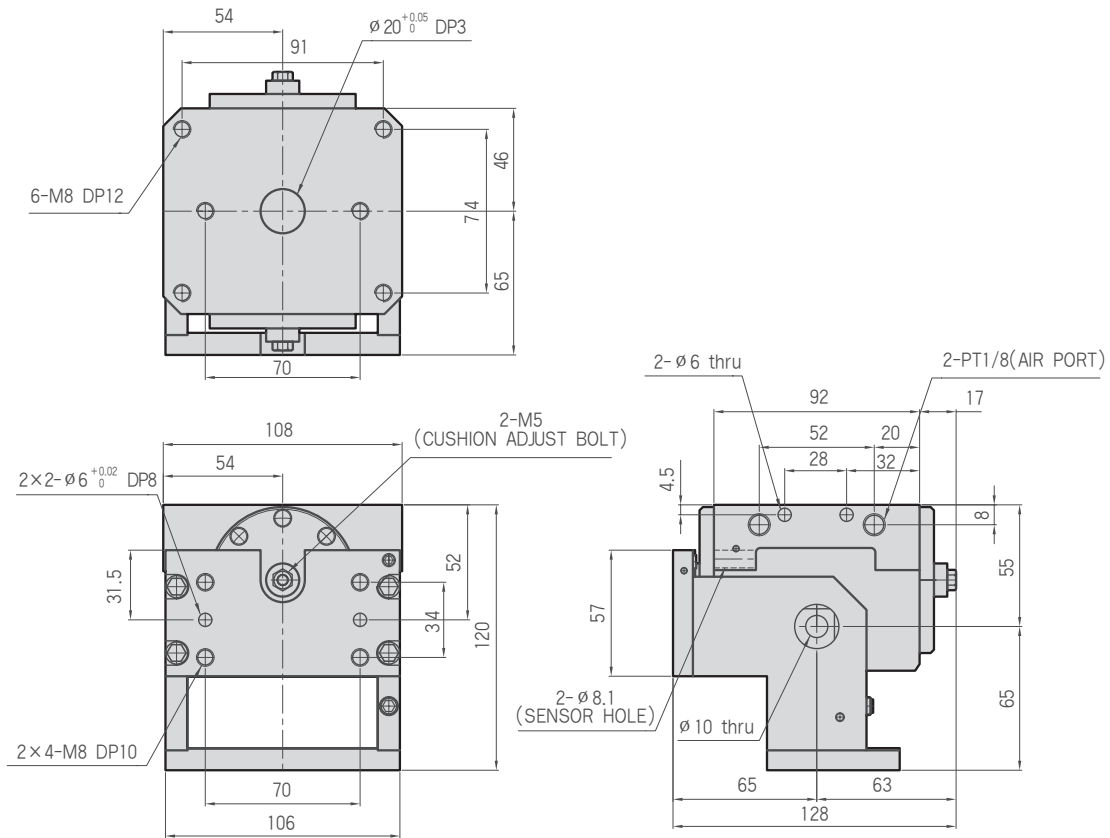
## ASU40N



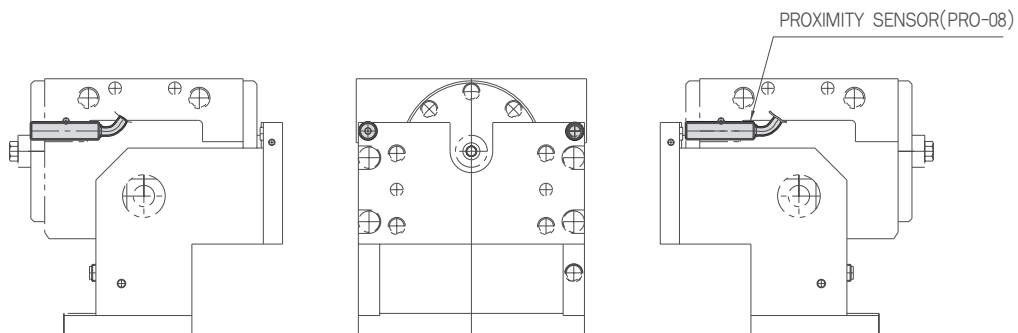
## ASU40N-Auto Switch



ASU50N



ASU50N-Auto Switch



# ASU-N Series

18

22

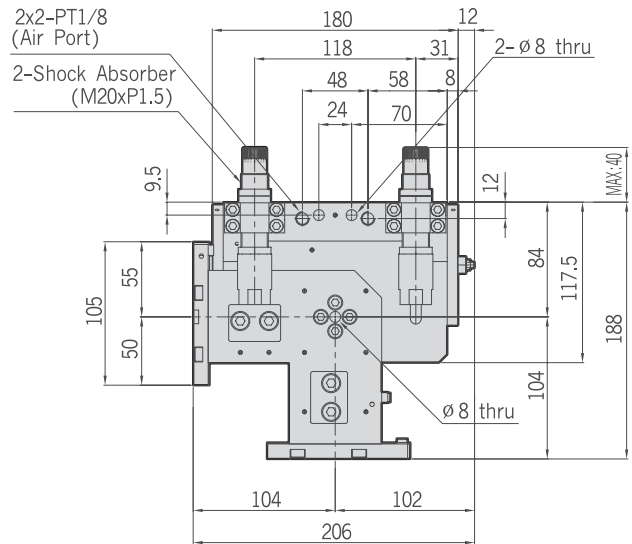
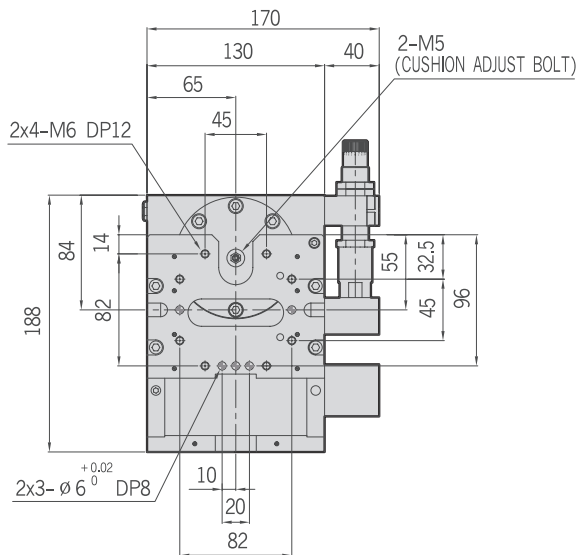
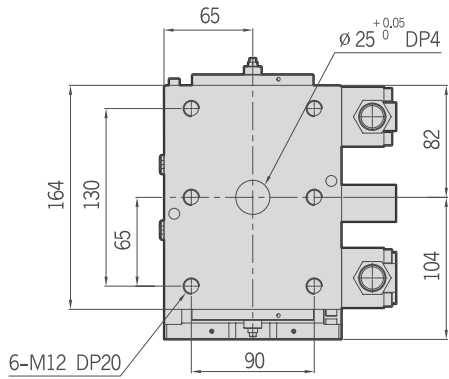
30

40

50

60

## ASU60N



## ASU60N-Auto Switch

