

CHELIC®

Ver. 1-1

CAT-1908

AUTOMATION

氣立可 自動化元件



氣動壓床

PNEUMATIC PRESS

The Keystone of Industrial 4.0

產品特色

FEATURE



氣動壓床的特點:

- 以壓縮空氣為動力源, 低噪音, 無污染, 環保, 操作簡便
- 四柱型開放式設計, 輕巧不佔空間, 結構簡單, 極少維修, 生產效率高
- 氣缸行程、下行速度可調, 調整簡單, 特殊行程可定制
- 出力調整容易, 只要調整氣壓壓力, 就能達到需要的壓力, 簡單又方便
- 安全設計, 雙按鈕操作, 設有急停按鈕, 另可選配腳踏控制
- 氣缸配有止轉導向桿, 使工作更精確
- 可選裝光電保護器, 工作更安全高效
- 特殊要求可接受定制

Pneumatic Press Feature:

- Use compressed air as power source, low noise, no pollution, environmental friendly, simple operation.
- Four column press in open design, compact, simple structure, low maintenance, high production efficiency.
- Descending speed of cylinder stroke can be adjusted, easy adjustment, special stroke can be customized.
- Easy adjustment of air pressure, only need to adjust the barometric pressure to achieve needed pressure, simple and convenient.
- Safe design which requires both hands to operate the system, double button operation, with stop button, and foot pedal control (optional).
- Cylinder with check turn guide rod to improve accuracy.
- Can supply photoelectric protector, improve safety and efficiency.
- Provide customization for special requirements.

壓床的適用範圍:

廣泛適用於家電業、電子工業、電器端子、鐘錶工業、照相機微型馬達等製造及零部件裝配, 最適用小零部件之嵌入、成型、裝配、鉚合、打印、沖孔、切斷、彎曲、燙金、印花等輕負荷精密要求。

Application Scope Of Pneumatic Press:

It is widely used in the manufacture of household appliances, electronics, electrical terminals, watches and clocks, cameras and micro motors, and parts assembly. It is most suitable for the precision requirements of light load such as embedding, forming, assembling, riveting, printing, punching, cutting, bending, stamping and printing of small parts.

訂購代碼

How to Order

CSZ	-	220
SERIES 系列		MODEL 型號
CSZ		220-350-550-550W-900-1500

CSZ-Four column press
四柱壓床

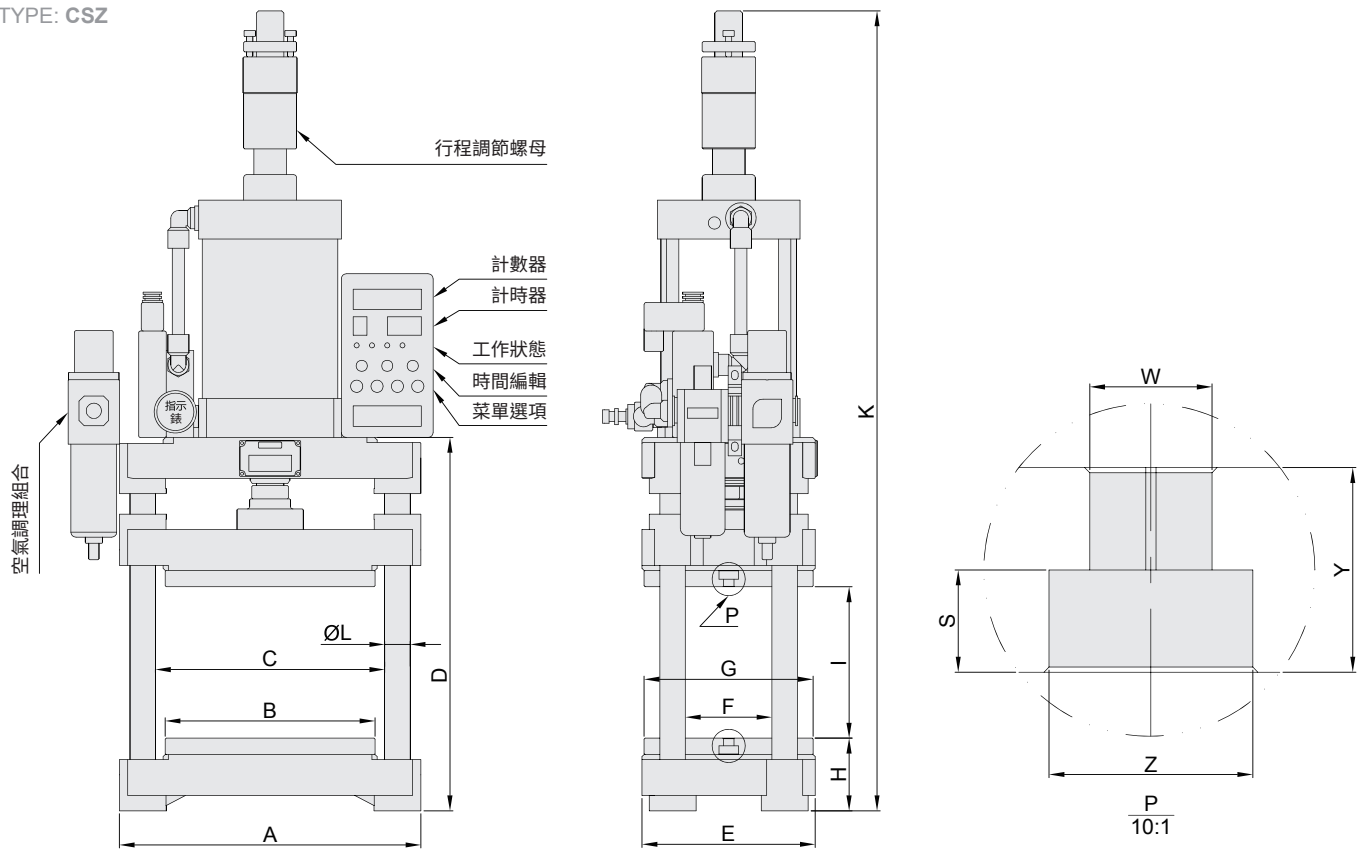
安裝尺寸

DIMENSIONS

CHELIC

型號: CSZ

TYPE: CSZ



型號	A	B	C	D	E	F	G	H	I	K	L	S	W	Y	Z
CSZ-220	296	206	225	415	170	85	166	71	300	770	25	7	10.5	16	19
CSZ-350	296	206	225	415	170	85	166	71	300	770	25	7	10.5	16	19
CSZ-550	296	206	225	415	170	85	166	71	300	900	25	7	10.5	16	19
CSZ-550W	388	256	300	510	240	128	236	85	350	995	32	9.5	12.5	20	24
CSZ-900	388	256	300	510	240	128	236	85	350	1050	32	9.5	12.5	20	24
CSZ-1500	388	256	300	510	240	128	236	85	350	1050	32	9.5	12.5	20	24

型號	工作台尺寸	最大工作高度	氣缸規格	電源(AC, 50HZ)	機器重量	使用氣壓
CSZ-220	206*166	190	DMBL2 80*100-50	220V	35KG	0.4-0.7MPa
CSZ-350	206*166	190	DMBL2 100*100-50	220V	40KG	0.4-0.7MPa
CSZ-550	206*166	190	DMBL2 125*100-50	220V	45KG	0.4-0.7MPa
CSZ-550W	246*196	240	DMBL2 125*100-50	220V	60KG	0.4-0.7MPa
CSZ-900	246*196	240	DMBL2 160*100-50	220V	68KG	0.4-0.7MPa
CSZ-1500	246*196	240	DMBL2 200*100-50	220V	72KG	0.4-0.7MPa

使用壓力	理論出力						
	型號	CSZ-220	CSZ-350	CSZ-550	CSZ-550W	CSZ-900	CSZ-1500
0.4MPa		181kgf	285kgf	458kgf	458kgf	753kgf	1206kgf
0.5MPa		226kgf	357kgf	573kgf	573kgf	942kgf	1507kgf
0.6MPa		272kgf	428kgf	688kgf	688kgf	1130kgf	1809kgf
0.7MPa		317kgf	500kgf	802kgf	802kgf	1319kgf	2110kgf

零件名稱

COMPONENTS

CHELIC®

CSZ系列氣動壓床

CSZ SERIES PNEUMATIC PRESS

鎖緊螺絲 工作時防止鬆動

Fasten screw Prevent loosening in operation

氣缸可調行程50mm

鎖緊螺絲需放鬆

Cylinder adjustable stroke 50mm

The fasten screws need to be loosened

電磁換向閥

控制氣缸往返

Electromagnetic directional valve

Control back and forth of cylinder

三點組合 控制壓力範圍，便於壓配效能

Three points combination Control pressure range to facilitate pressure matching efficiency

下壓力錶 指示下壓時壓力

Down gauge Indicate downward pressure

控制按鈕 需左右一起按下才能操作壓床動作，另有腳踏開關控制選用

Control button Need to press left and right together to operate the press action, optional choice for foot pedal switch control

計數器 歸零功能，能了解每日生產量，便於管理了解成本

Counter Reset operation for understanding daily production and cost

計時器 可以顯示下壓工作時間及返回時間

Timer It can display down-pressure working time and return time

工作狀態 工作狀態指示燈

Working condition Working status indicator

時間編輯 設置下壓時間和返回時間

Time editing Set down time and return time

菜單選項 設計運行參數及功能選項

Menu options Set operating parameters and functional selection

四柱導向板 可安裝模具，與工作台面一致

Four-column guide plate Installable mold is consistent with workbench

緊急停止 緊急安全按鈕

Emergency stop Emergency safety button



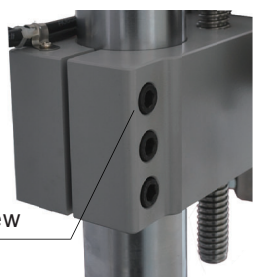
CDZ 系列 氣動壓床

CDZ SERIES PNEUMATIC PRESS

CHELIC®

產品特色

FEATURE



Fasten screw

鎖緊螺絲

訂購代碼

How to Order

CDZ	-	80
SERIES 系列		MODEL 型號
CDZ		80-140-220-220W-350-550

CDZ-Single column press
單柱壓床

氣動壓床的特點:

- 以壓縮空氣為動力源, 低噪音, 無污染, 環保, 操作簡便
- 沒有油壓系統待機時所產生之噪音, 可節省電力消耗降低生產成本
- 多功能用途適用於壓入、沖孔、鉚合、裝配、切斷等
- 可根據產品或模具的大小調整閉合高度
- 氣缸行程可調, 特殊行程可定做
- 出力調整容易, 只要調整氣壓壓力, 就能達到需要的壓力, 簡單又方便
- 安全設計, 雙按鈕操作, 另可加裝光電保護裝置, 工作更安全
- 特殊要求可接受定制

Pneumatic Press Feature:

- Use compressed air as power source, low noise, no pollution, environmental friendly, simple operation.
- No noise is generated when standby comparing to oil pressure system, can save power and reduce production cost.
- Multifunctional applications for pressing, punching, riveting, assembling, cutting, etc.
- The closure height can be adjusted according to the size of the product or mould.
- Cylinder stroke can be adjusted and special stroke can be customized.
- Easy adjustment of air pressure, only need to adjust the barometric pressure to achieve needed pressure, simple and convenient.
- Safe design which requires both hands to operate the system, double button operation, and can supply additional optoelectronic protection device to work safer.
- Provide customization for special requirements.

緊定螺絲:

- 限位作用, 防止活動基座上下兩個鎖緊螺絲太緊, 損壞活動基座
- 調整活動基座高度時, 先鬆開兩個鎖緊螺絲, 再用緊定螺絲頂開活動基座
- 活動基座上下移動時, 用於調整與立柱之間的間隙

Set screw:

- Limit spacing function to prevent the upper and lower locking screw of the movable base from being too tight which will damage the movable base
- When adjusting the height of the movable base, loose two locking screws first, and then use the tightening screw to open the top of the movable base .
- In order to adjust the space between the column and the movable base, the adjustment needs to be made when the movable base is moving up and down.

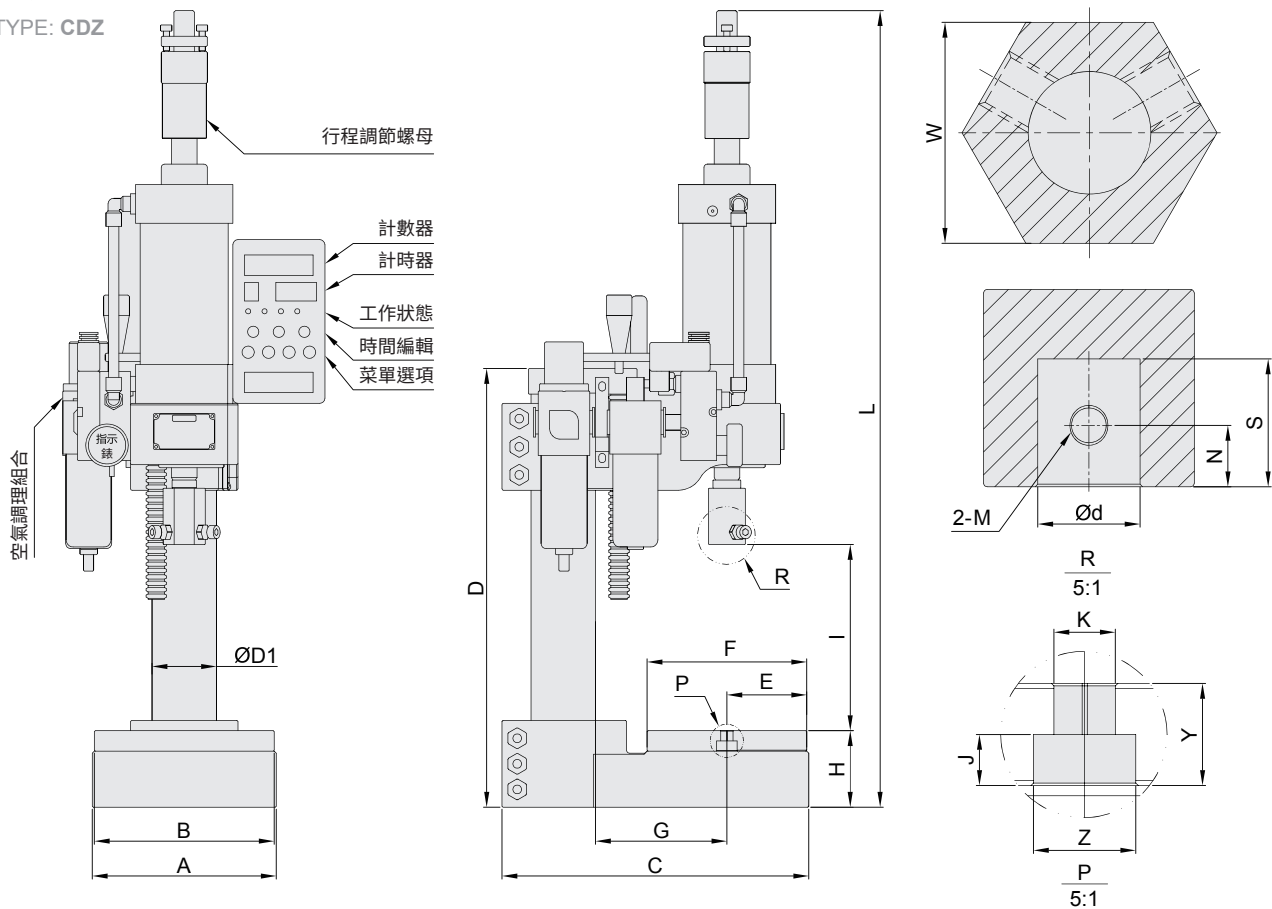
安裝尺寸

DIMENSIONS

CHELIC[®]

型號: **CDZ**

TYPE: **CDZ**



型號	A	B	C	D	D1	E	F	G	H	I	J	K	L	d	M	N	S	W	Y	Z
CDZ-80	180	176	300	480	63	80	156	128.5	75	250	7	10.5	760	20	M8	10	25	36	16	19
CDZ-140	180	176	300	480	63	80	156	128.5	75	250	7	10.5	760	20	M8	10	25	36	16	19
CDZ-220	180	176	300	480	63	80	156	128.5	75	250	7	10.5	800	25	M10	15	30	42	16	19
CDZ-220W	250	246	345	510	70	100	196	145	90	250	9.5	12.5	830	25	M10	15	30	42	20	24
CDZ-350	250	246	345	510	70	100	196	145	90	250	9.5	12.5	830	25	M10	15	30	42	20	24
CDZ-550	250	246	345	510	70	100	196	145	90	250	9.5	12.5	850	25	M10	15	30	42	20	24

型號	工作台尺寸	最大工作高度	氣缸規格	電源(AC, 50HZ)	機器重量	使用氣壓
CDZ-80	176*156	240	DMBL2 50*100-50	220V	28KG	0.4-0.7MPa
CDZ-140	176*156	240	DMBL2 63*100-50	220V	33KG	0.4-0.7MPa
CDZ-220	176*156	240	DMBL2 80*100-50	220V	38KG	0.4-0.7MPa
CDZ-220W	246*196	240	DMBL2 80*100-50	220V	40KG	0.4-0.7MPa
CDZ-350	246*196	240	DMBL2 100*100-50	220V	45KG	0.4-0.7MPa
CDZ-550	246*196	240	DMBL2 125*100-50	220V	50KG	0.4-0.7MPa

使用壓力	理論出力						
	型號	CDZ-80	CDZ-140	CDZ-220	CDZ-220W	CDZ-350	CDZ-550
0.4MPa		65kgf	112kgf	181kgf	181kgf	285kgf	458kgf
0.5MPa		82kgf	140kgf	226kgf	226kgf	357kgf	573kgf
0.6MPa		98kgf	168kgf	272kgf	272kgf	428kgf	688kgf
0.7MPa		115kgf	115kgf	317kgf	317kgf	500kgf	802kgf

零件名稱

COMPONENTS

CHELIC®

CDZ系列氣動壓床

CDZ SERIES PNEUMATIC PRESS

鎖緊螺絲 工作時防止鬆動

Fasten screw Prevent loosening in operation

氣缸可調行程50mm

鎖緊螺絲需放鬆

Cylinder adjustable stroke 50mm

The fasten screws need to be loosened

工作台調整手輪

調整工作台上下高度

Workbench adjustment handwheel

Adjust the height of workbench

三點組合 控制壓力範圍，
便於壓配效能

Three points combination
Control pressure range to facilitate pressure matching efficiency

下壓力錶 指示下壓時壓力

Down gauge

Indicate downward pressure

計數器 歸零功能，能了解每日生產量，便於管理了解成本

Counter Reset operation for understanding daily production and cost

計時器 可以顯示下壓工作時間及返回時間

Timer It can display down-pressure working time and return time

工作狀態 工作狀態指示燈

Working condition Working status indicator

時間編輯 設置下壓時間和返回時間

Time editing Set down time and return time

菜單選項 設計運行參數及功能選項

Menu options Set operating parameters and functional selection

控制按鈕 需左右一起按下才能操作壓床動作，另有腳踏開關控制選用

Control button
Need to press left and right together to operate the press action, optional choice for foot pedal switch control



壓床的適用範圍：



廣泛適用於家電業、電子工業、電器端子、鐘錶工業、照相機微型馬達等製造及零部件裝配，最適用小零部件之嵌入、成型、裝配、鉚合、打印、沖孔、切斷、彎曲、燙金、印花等輕負荷精密要求。

Application scope of pneumatic press:

It is widely used in the manufacture of household appliances, electronics, electrical terminals, watches and clocks, cameras and micro motors, and parts assembly. It is most suitable for the precision requirements of light load such as embedding, forming, assembling, riveting, printing, punching, cutting, bending, stamping and printing of small parts.

TAIWAN CHELIC CO., LTD.
www.chelic.com



 本公司有保留變更規格之權利，恕不另行通知，請與業務單位保持聯繫，以便更新版本。
 The specification are subject to change without advance notice.