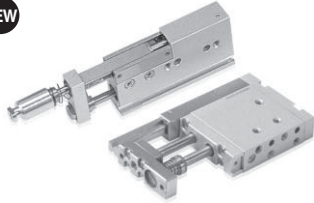


PPU Series

Features

NEW



- Miniature slim cylinder, which is combined with 1 cylinder and guide rod rotation prevent and vacuum pipe.
- High-accuracy and high performance by applying of Ball Bearing for up and down motion
- Diversity of installations (3 directions)
- Positioning and shockproof function for workpiece with anti-shock cushion at the end of connector.
- Auto Switch for the detection of position can be attached
- Applicable to small-size work piece handling such as electric materials and semiconductor chips

Order form

PPU06B - 10 - CA2 - A2S

① ② ③ ④

- ① Series
- ② Stroke(mm) : 10, 20
- ③ Connector type

④ Auto Switch type

Symbol	Type	Length	Applied quantity
A2S	DSC PRO-A2	1m	1ea (Detect Up or Down)
A2LS	(2-wire)	3m	
B2S	PLC PRO-B2	1m	
B2LS	(3-wire)	3m	
Blank	Switch No		

Symbol	Specificaton	Type
Blank	Direct type (Standard, CA1)	∅ 6
CA2	Direct type	∅ 3.2
CB1	Screw type	M5 Male
CB2		M3 Male
CC1		M5 Female
CC2		M3 Female

※Above connector only for PPU06B Series.

※ The allowable quantity for Auto Switch mounting is generally one.
If you need to mount 2 switches, please contact to us.
※ For Auto switch for PPU06S-10, please contact to us.

Specification

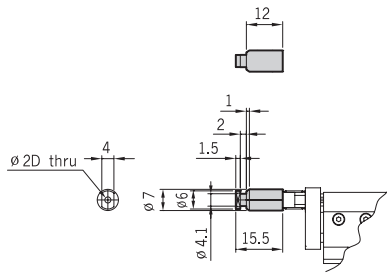
Model		PPU06B	PPU06S
Bore size(mm)		6	6
Rod(mm)		3	3
Stroke(mm)		10, 20	10
Theoretical thrust(kgf)	Forward	0.28 × P	0.28 × P
	Backward	0.21 × P	0.21 × P
P : Air pressure(kgf/cm ²)			
Air port size		M3	M3
Main body weight(kgf)		Stroke 10 : 0.04, Stroke 20 : 0.05	0.03
Shock Absorbing stroke(mm)		3	1
Fluid		Clean air Note 1)	
Air pressure(kgf/cm ²)		1.5 ~ 7 (General resistance pressure: 9.2) Note 2)	
Lubrication		No need (if need, use one sort of turbine oil: SPEC ISOVG 32)	
Temperature(°C)		5 ~ 60	
Motion type		Double-acting type	
Accuracy(mm)		± 0.01	
Guide type(mm)		Liner Guide	

Note 1) Clean air: Fresh air containing solid matters with 0.3% of supersaturated moisture and 99.9% of liquid oil that passed through the 3-10 μ m degree of filtering
Note 2) Guaranteed capacity of resist pressure: A pressure that does not cause an abnormality in parts when it is applied for 1 minute without any weight loaded.

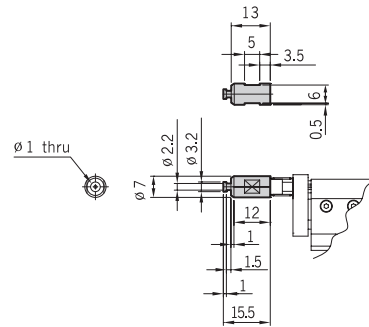


Connector type

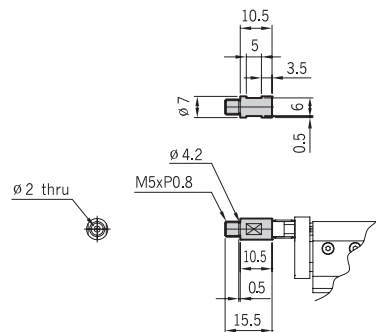
◆ PRO-CA1



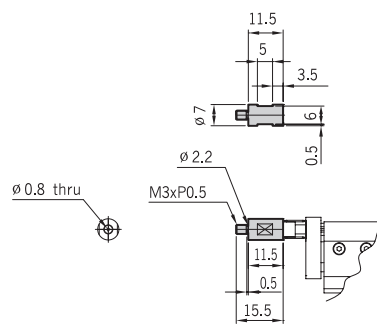
◆ PRO-CA2



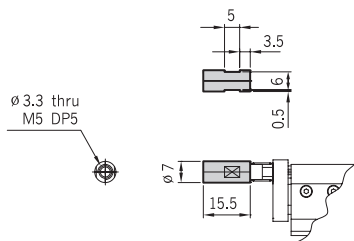
◆ PRO-CB1



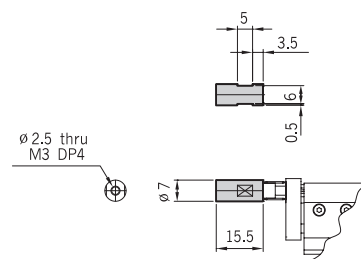
◆ PRO-CB2



◆ PRO-CC1



◆ PRO-CC2



PPU Series

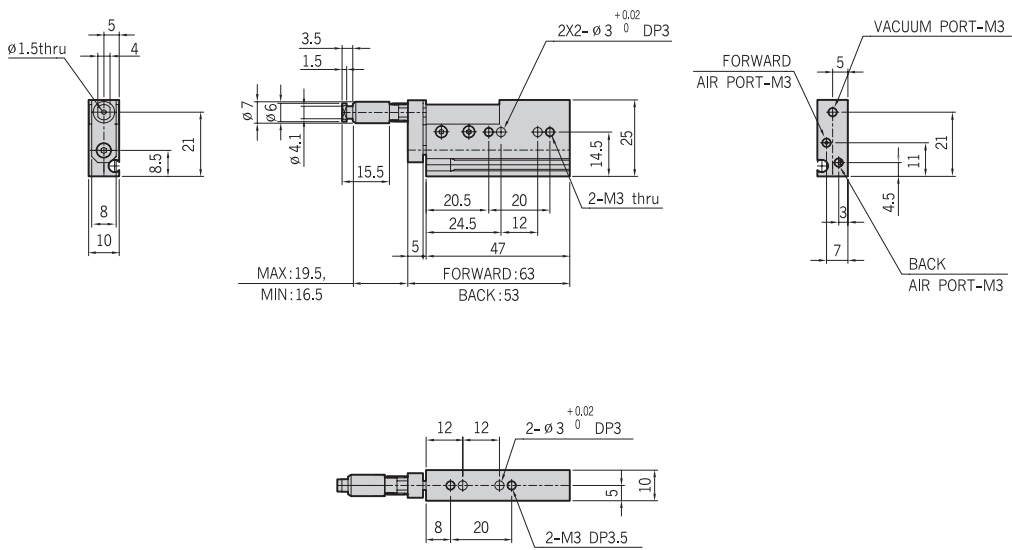
06B

06S

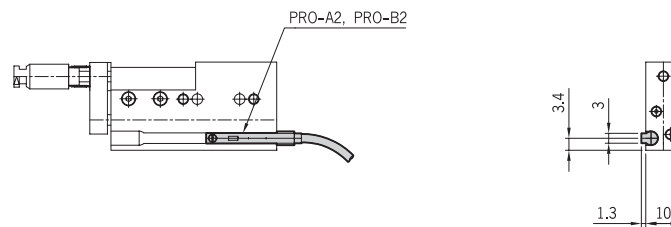
10

20

PPU06B-10



PPU06B-10-Auto Switch



PROTEC

06B

06S

10

20

PICK UP

Auto Pitch

PPU

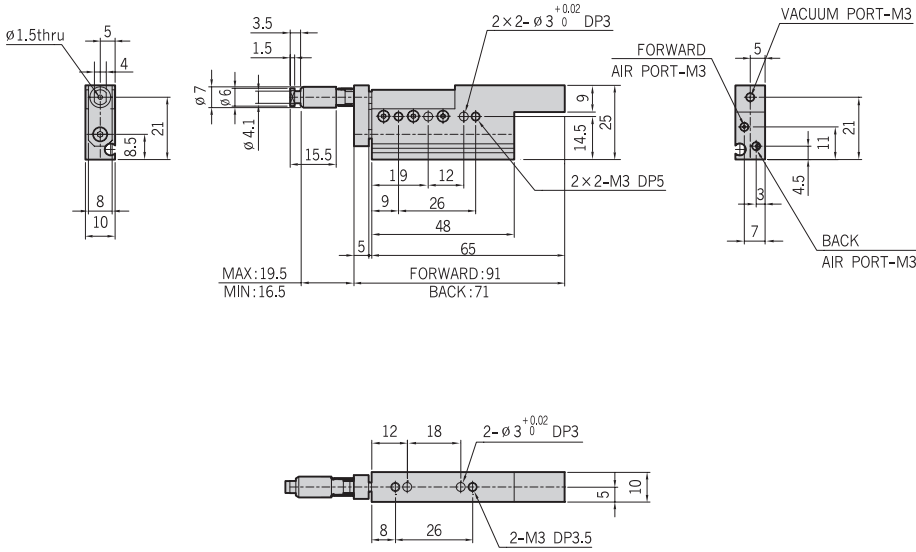
PPC

PPR

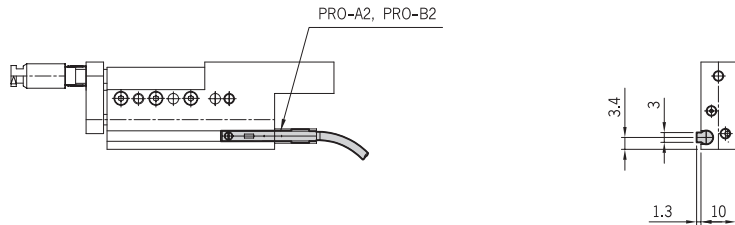
PPRL

PPRM

PPU06B-20



PPU06B-20-Auto Switch



PPU Series

06B

06S

10

PPU06S-10

