

PH15-S Series

Features



- Parallel operating type general hand with Wedge Plunger structure
- Realized compact and light style
- Diversity of installation (4 types)
- Suitable for heavy material handling with strong gripping force
- Auto Switch (proximity) for the detection of position can be attached

Order form

PH15 - 40S - P - PNP

①

②

③

④

③ Auto Switch specification

Symbol	Type	Quantity
P	DC 3-wire proximity sensor	2ea
PS	(M8×P1, 2m / body Length 32mm)	1ea
P2	DC 3-wire proximity sensor	2ea
P2S	(M8×P1, 2m / body Length 16mm)	1ea

* For "P" type, it may be protruded from the end of hand body.

* For PH15-20S and 25S, "P2" option is recommended.

① Series

② Bore size & Stroke

Name	Bore size(mm)	Stroke(mm)
20S	20	8
25S	25	12
30S	30	16
40S	40	20
50S	50	26
60S	60	32
80S	80	50
100S	100	60

④ Output of Proximity Sensor

Name	Output
Blank	NPN type
PNP	PNP type

Specification

Model	PH15-20S	PH15-25S	PH15-30S	PH15-40S	PH15-50S	PH15-60S	PH15-80S	PH15-100S
Bore size(mm)	20	25	30	40	50	60	80	100
Stroke(mm)	8	12	16	20	26	32	50	60
Gripping force(kgf) Air pressure(5kgf/cm ²) <small>Note 2)</small>	Close	8.6	12.3	18.2	32.8	50.7	79.3	107
	Open	9.5	15	20.5	38	60.4	89.3	114
Air port size	M5	M5	M5	PT1/8	PT1/8	PT1/8	PT1/8	PT1/8
Main body weight(kgf)	0.13	0.27	0.43	0.75	1.3	2.4	5.0	9.2
Allowable length of attachment L(mm)	30	35	40	50	60	80	110	140
Displacement of attachment H(mm) <small>Note 3)</small>								
Fluid	Clean air <small>Note 1)</small>							
Air pressure(kgf/cm ²)	3 ~ 7							
Lubrication	No need (if need, use one sort of turbine oil: SPEC ISOVG 32)							
Temperature(°C)	5 ~ 60							
Accuracy(mm)	±0.03			±0.08			±0.1	
Max. Cycle Per Minute(C.P.M)	100			60			30	
Motion type	Double-acting type (Structure: Parallel open & close by Wedge Plunger) (Guide: Metal Guide)							
Tolerance of open & close stroke(mm)	Open: -0.5 ~ +1, Close: -1 ~ +0.5							

Note 1) Clean air: Fresh air containing solid matters with 0.3% of supersaturated moisture and 99.9% of liquid oil that passed through the 3-10 μ m degree of filtering

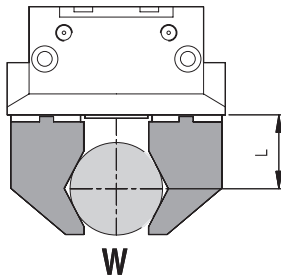
Note 2) The position of gripping point for gripping force is the end point of the Finger.

Note 3) For the base point of tolerable length and displacement in attachment, refer to page 48.(Tolerable value with 5kgf/cm² of Air pressure.)



▶ ▶ Refer to page 49 for how to read the graph.

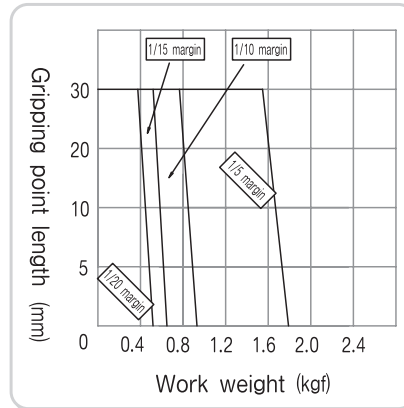
WORK outer diameter gripping force graph



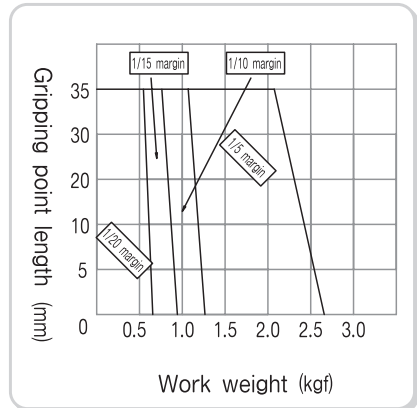
Outer diameter gripping state

W : Work weight
L : Gripping point length

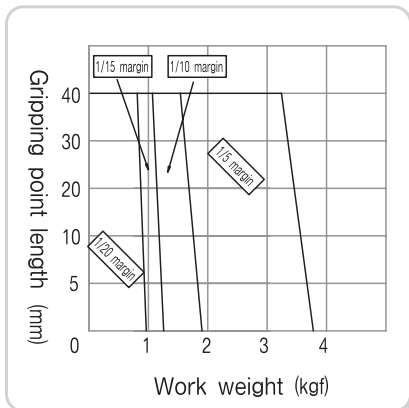
◆PH15-20S



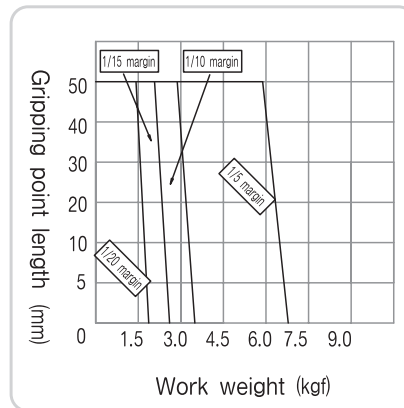
◆PH15-25S



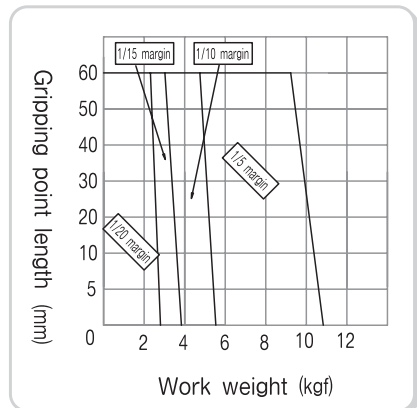
◆PH15-30S



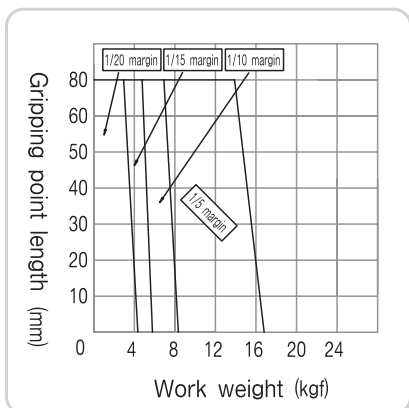
◆PH15-40S



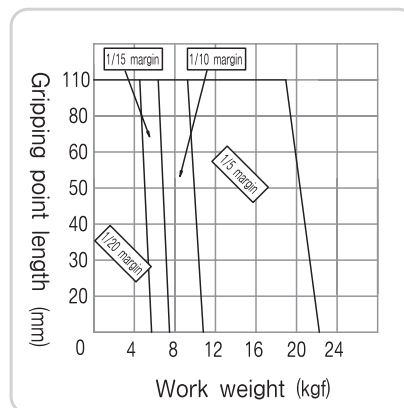
◆PH15-50S



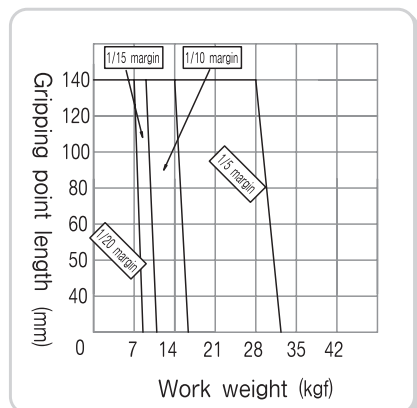
◆PH15-60S



◆PH15-80S



◆PH15-100S



HAND

- PH01-A
- PH01-D
- PH01-G
- PH01K
- PH01K-C
- PH02
- PH04
- PH05
- PH06
- PH06-L
- PH07
- PH08
- PH09
- PH12
- PH14-S
- PH15-S**
- PH21
- PH22
- PH23

⚠ Caution

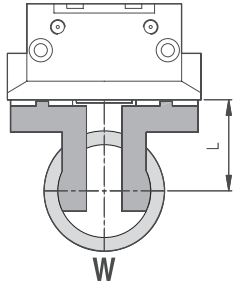
If using the attachment longer than allowable length as specified in the graph, it may have an adverse effect on the guide and cause problem to durability. Always use the gripping force within the specified length.



PH15-S Series

▶ Refer to page 49 for how to read the graph.

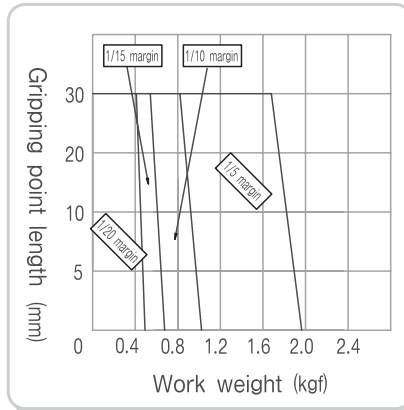
WORK inner diameter gripping force graph



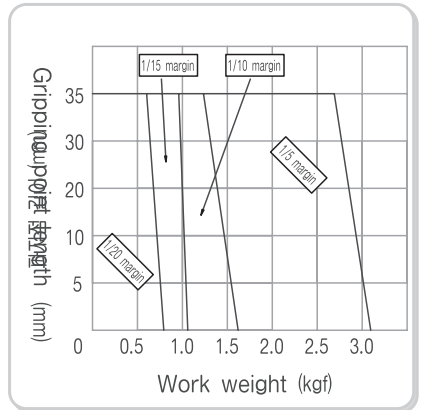
Inner diameter gripping state

W: Work weight
L: Gripping point length

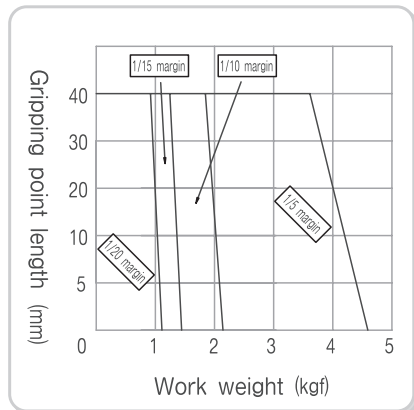
◆PH15-20S



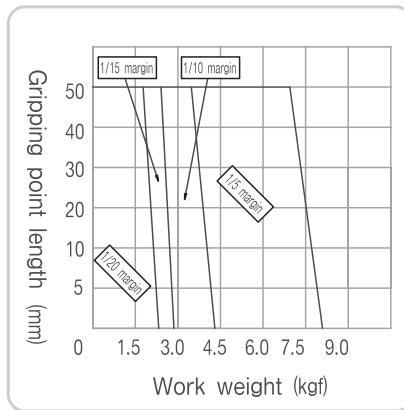
◆PH15-25S



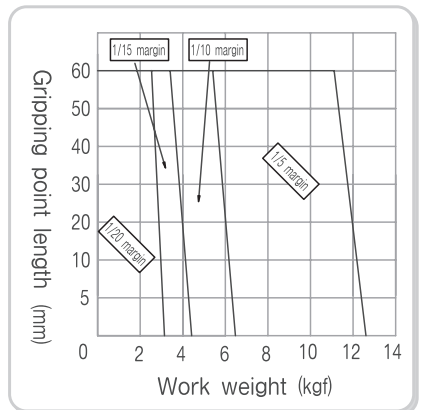
◆PH15-30S



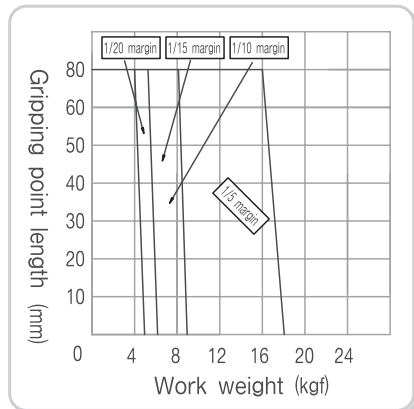
◆PH15-40S



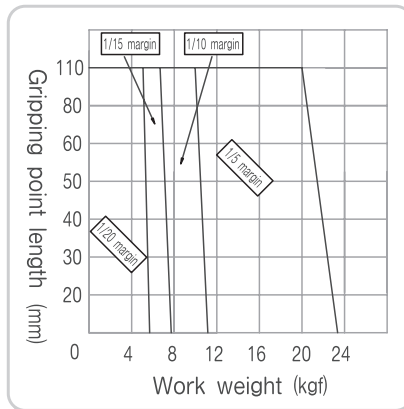
◆PH15-50S



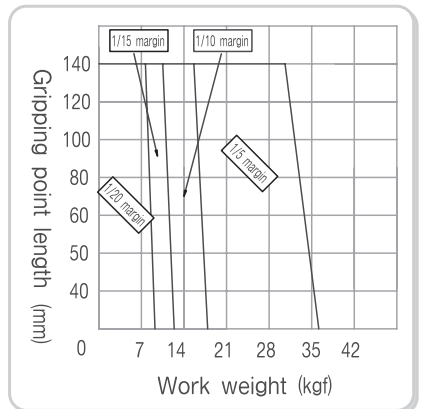
◆PH15-60S



◆PH15-80S



◆PH15-100S



20S

25S

30S

40S

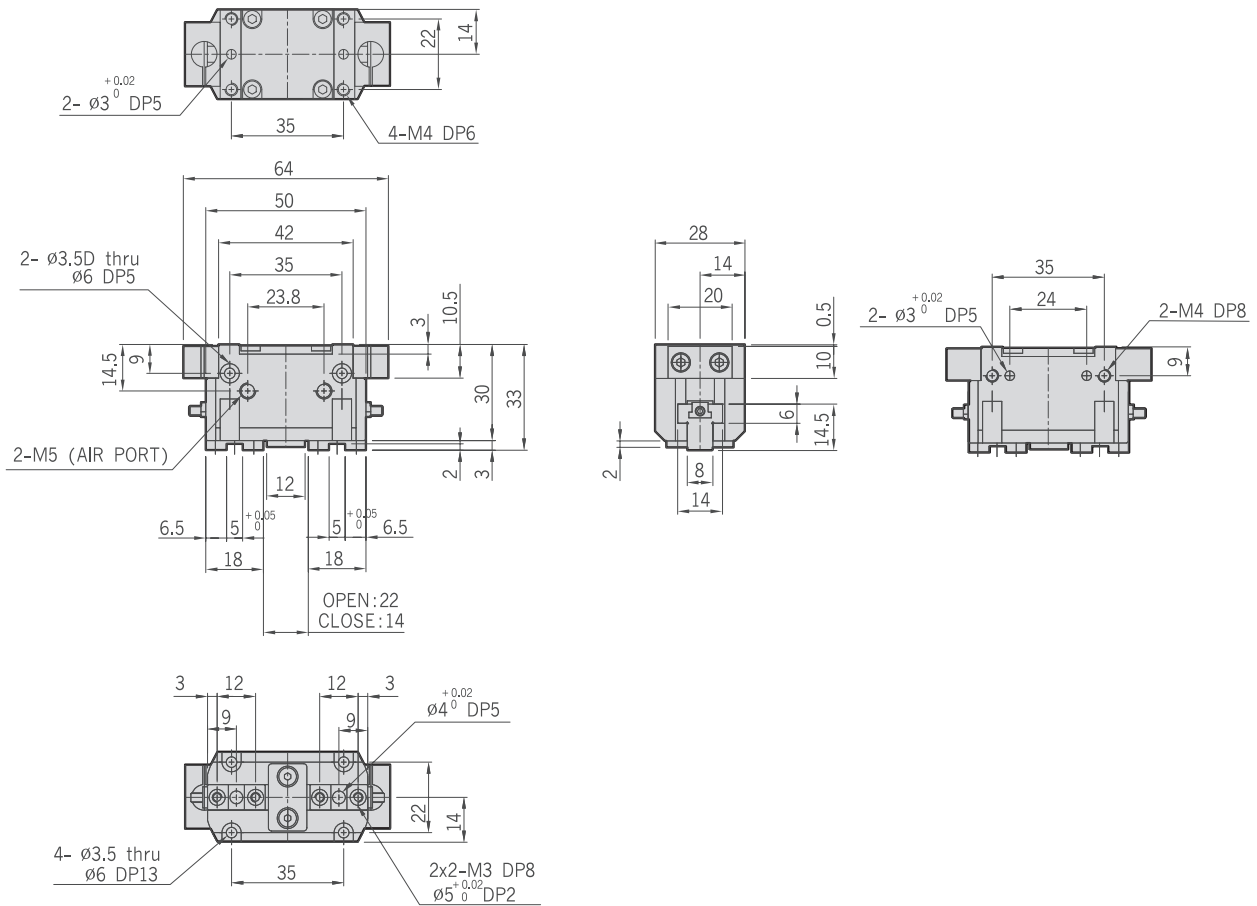
50S

60S

80S

100S

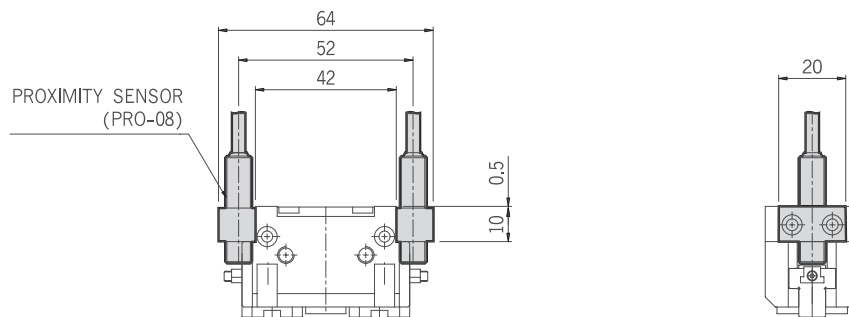
PH15-20S



HAND

- PH01-A
- PH01-D
- PH01-G
- PH01K
- PH01K-C
- PH02
- PH04
- PH05
- PH06
- PH06-L
- PH07
- PH08
- PH09
- PH12
- PH14-S
- PH15-S**
- PH21
- PH22
- PH23

PH15-20S-Auto Switch





PH15-S Series

20S

25S

30S

40S

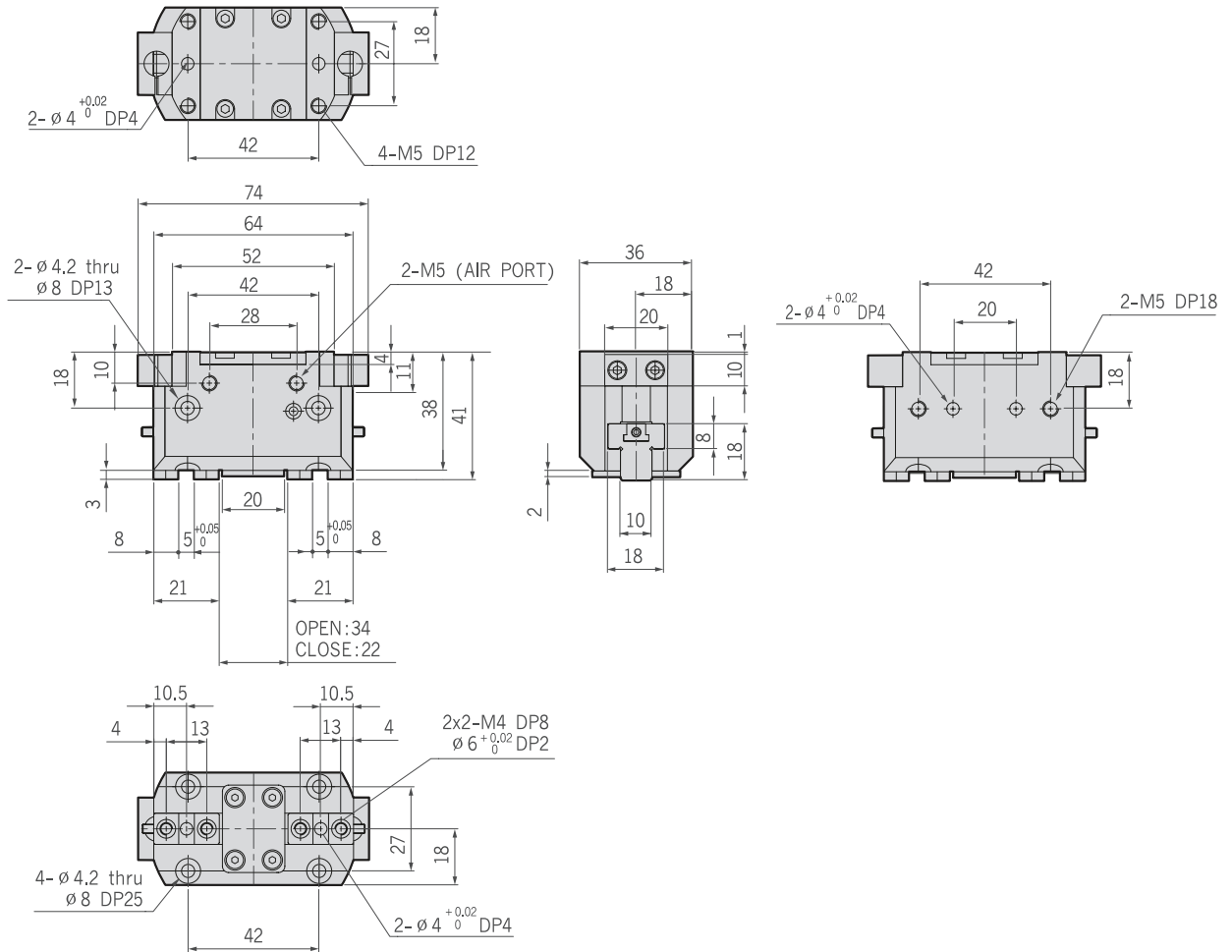
50S

60S

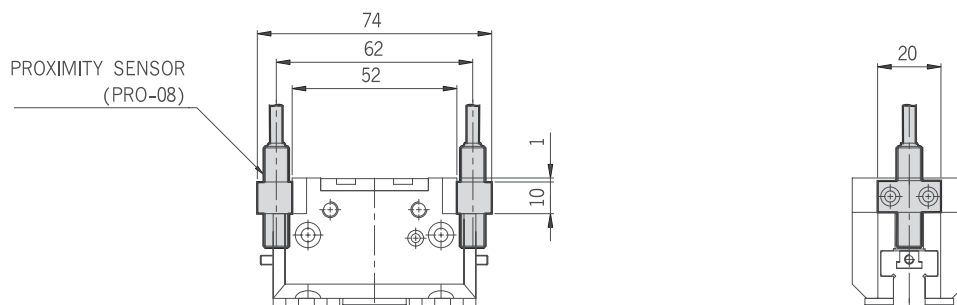
80S

100S

PH15-25S



PH15-25S-Auto Switch



20S

25S

30S

40S

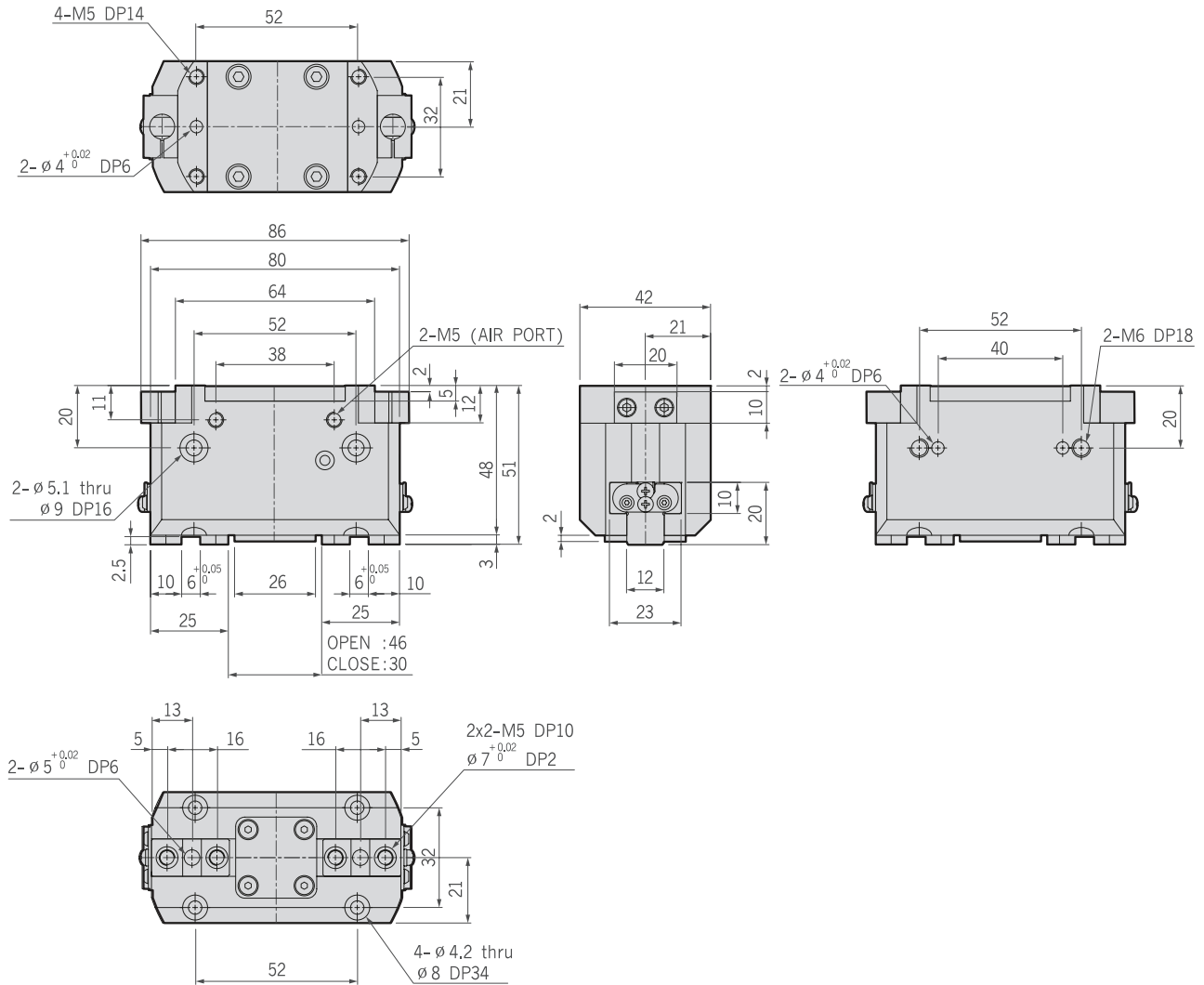
50S

60S

80S

100S

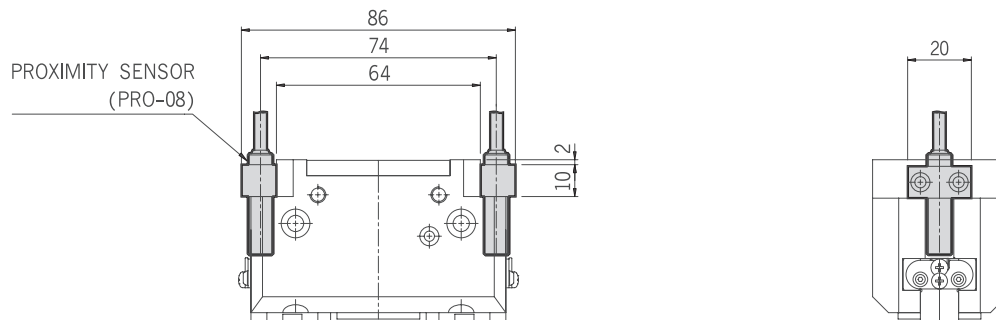
PH15-30S



HAND

- PH01-A
- PH01-D
- PH01-G
- PH01K
- PH01K-C
- PH02
- PH04
- PH05
- PH06
- PH06-L
- PH07
- PH08
- PH09
- PH12
- PH14-S
- PH15-S**
- PH21
- PH22
- PH23

PH15-30S-Auto Switch





PH15-S Series

20S

25S

30S

40S

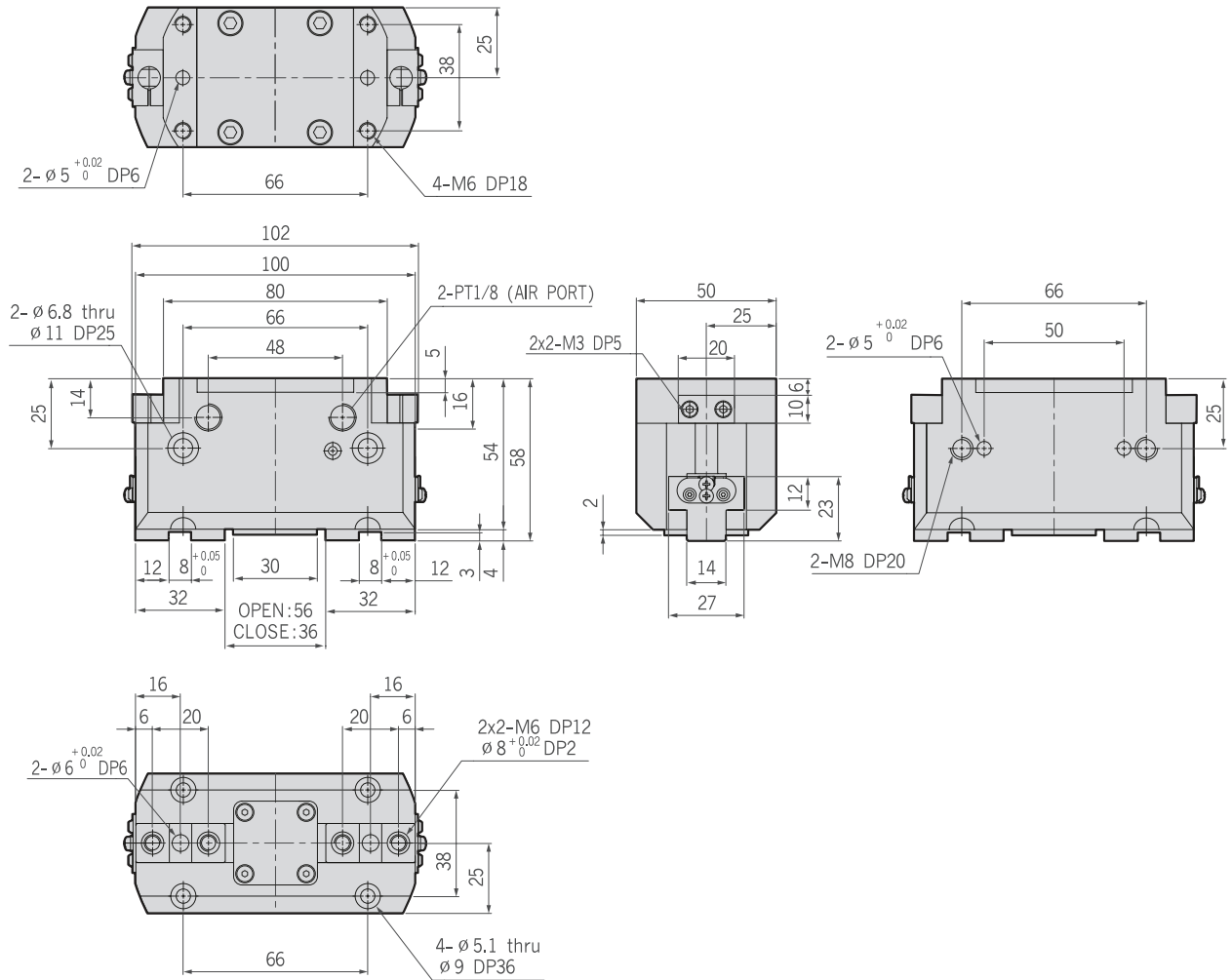
50S

60S

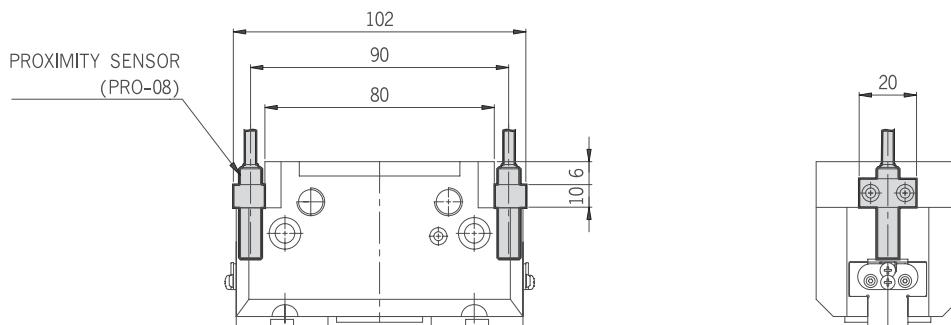
80S

100S

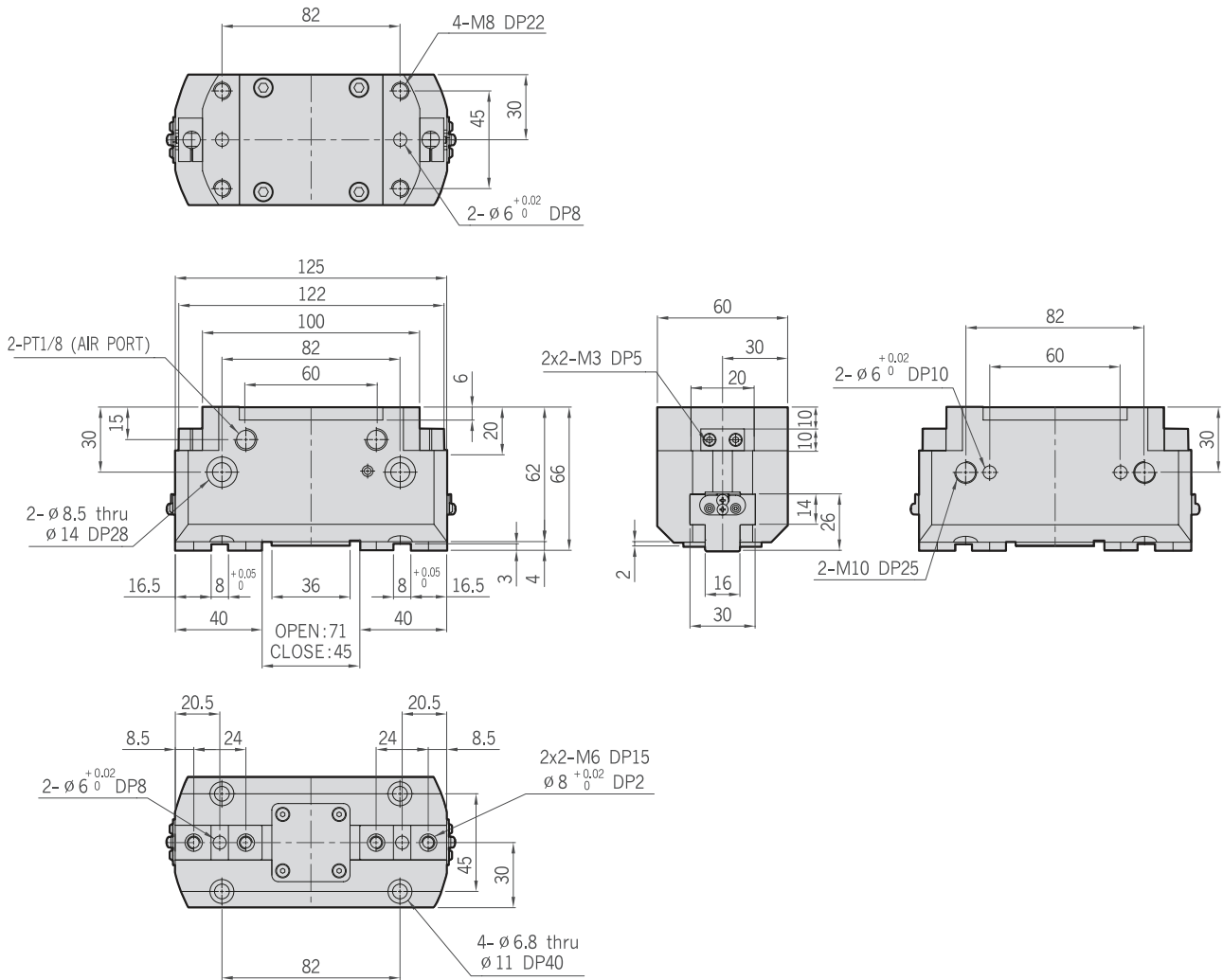
PH15-40S



PH15-40S-Auto Switch



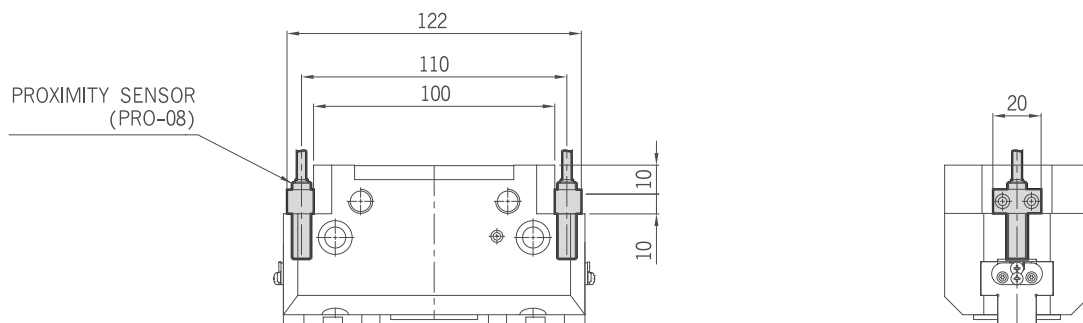
PH15-50S



HAND

- PH01-A
- PH01-D
- PH01-G
- PH01K
- PH01K-C
- PH02
- PH04
- PH05
- PH06
- PH06-L
- PH07
- PH08
- PH09
- PH12
- PH14-S
- PH15-S**
- PH21
- PH22
- PH23

PH15-50S-Auto Switch





PH15-S Series

20S

25S

30S

40S

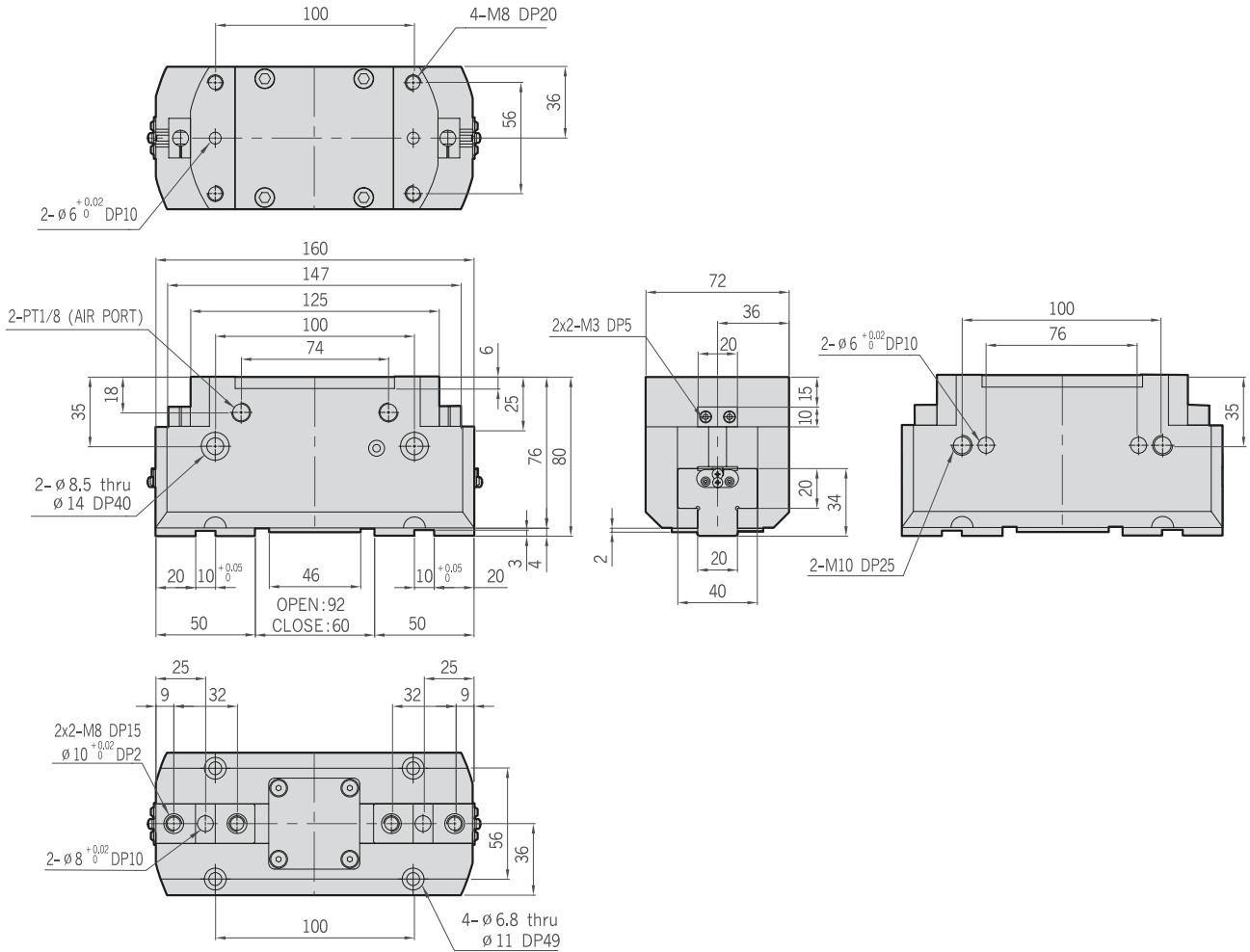
50S

60S

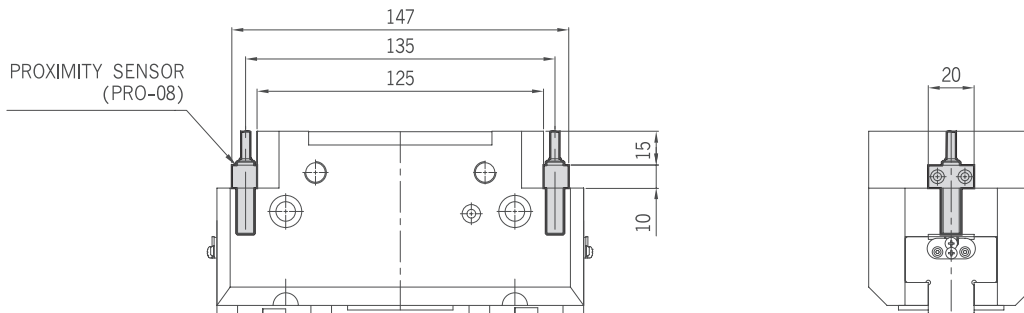
80S

100S

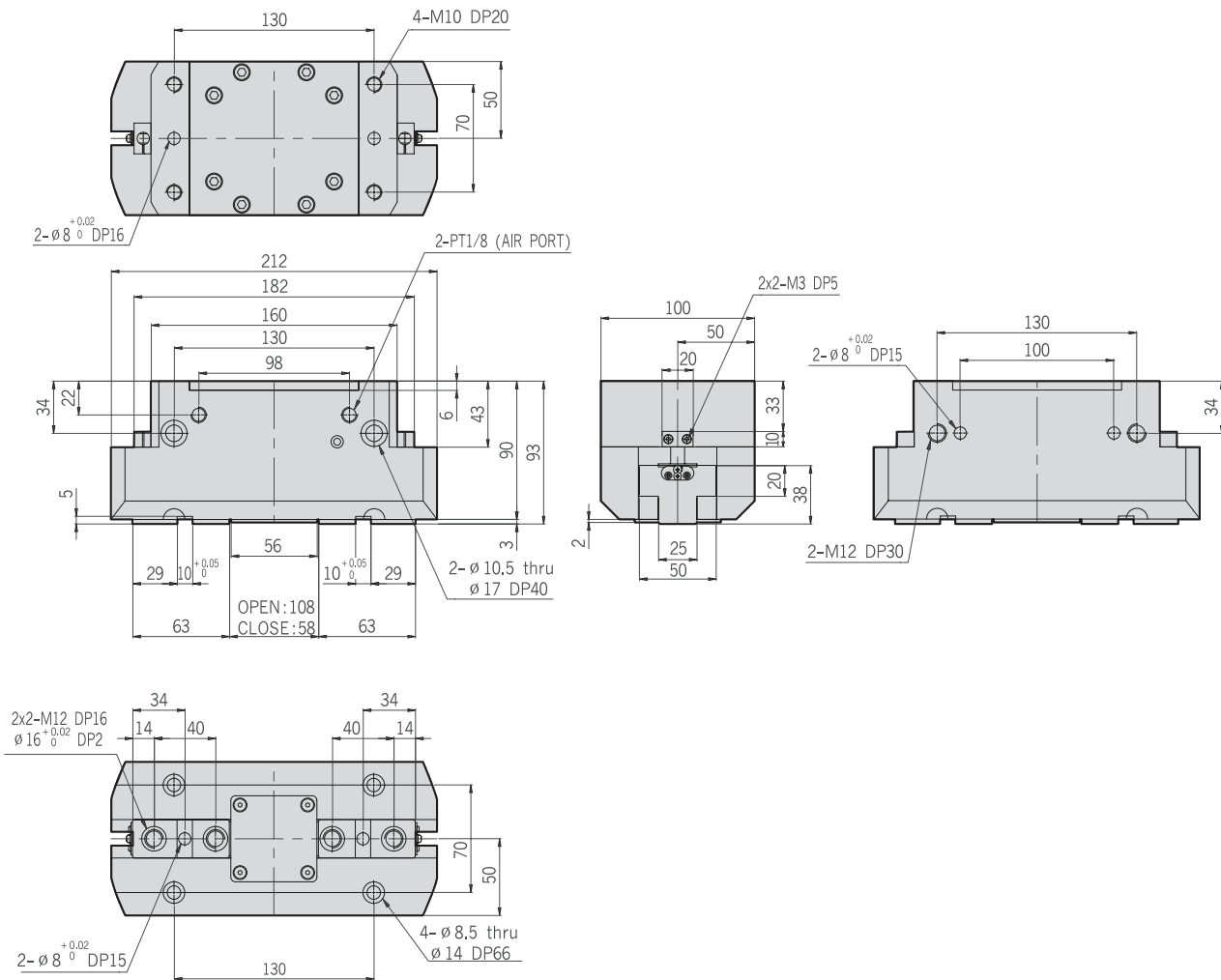
PH15-60S



PH15-60S-Auto Switch



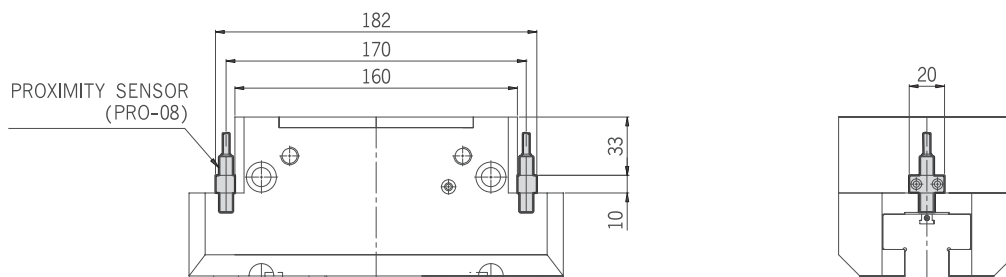
PH15-80S



HAND

- PH01-A
- PH01-D
- PH01-G
- PH01K
- PH01K-C
- PH02
- PH04
- PH05
- PH06
- PH06-L
- PH07
- PH08
- PH09
- PH12
- PH14-S
- PH15-S**
- PH21
- PH22
- PH23

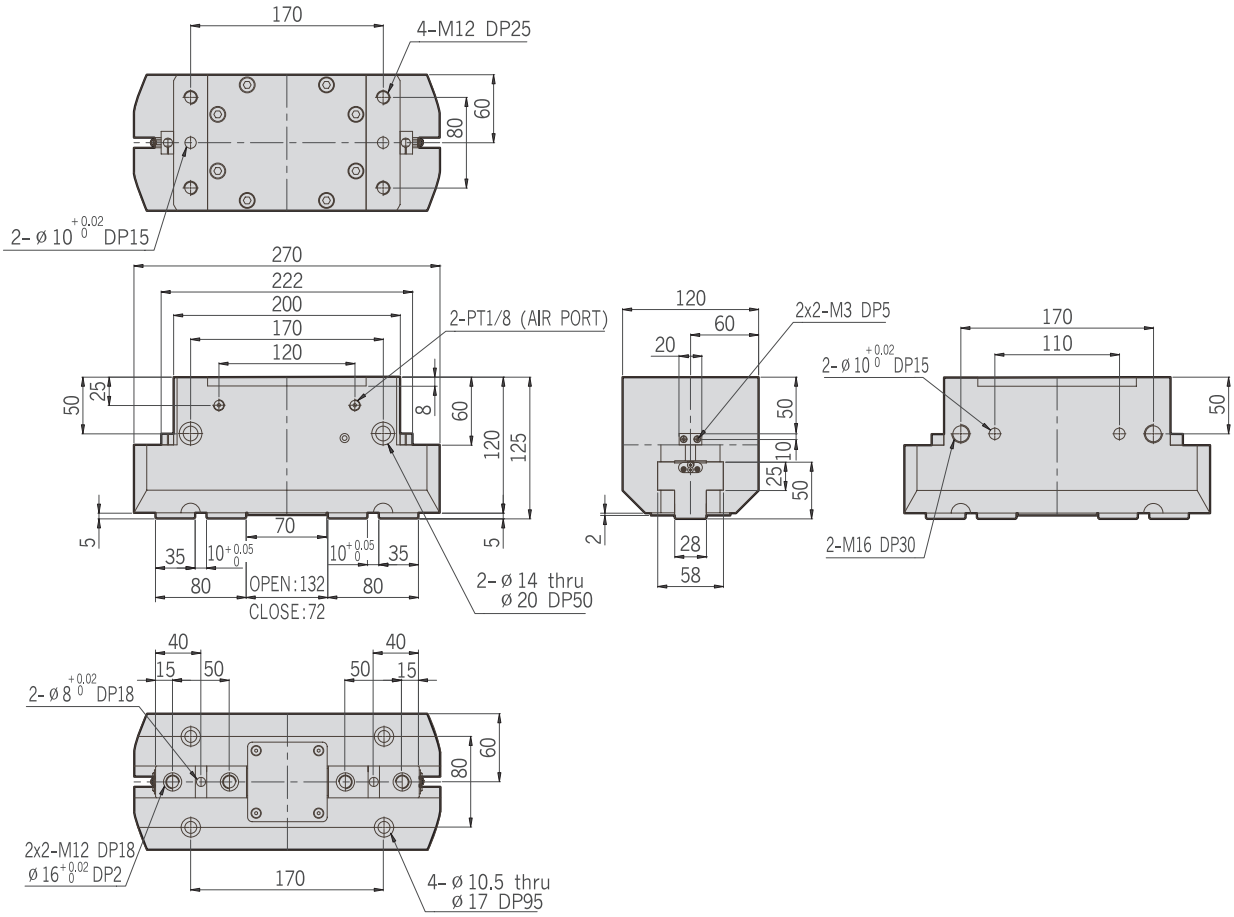
PH15-80S-Auto Switch



PH15-S Series

20S 25S 30S 40S 50S 60S 80S 100S

PH15-100S



PH15-100S-Auto Switch

