

PH14-S Series

Features



- Parallel operating type circular general hand with Wedge Plunger structure
- Stable structure ensured with high gripping force.
- Compact and light weight
- Possible to install Center Pusher (Selectable option for "CP")
- Centralized piping configurable with the bottom Air Port Type (Selectable option for "AP")
- Auto Switch (proximity) for the detection of position can be attached

Order form

PH14 - 60S - P2 - PNP - AP - CP

① ② ③ ④ ⑤ ⑥

③ Auto Switch specification

Symbol	Type	Quantity
P	PSC 3-wire proximity sensor	2ea
PS	(M8×P1, 2m / body Length 32mm)	1ea
P2	PSC 3-wire proximity sensor	2ea
P2S	(M8×P1, 2m / body Length 16mm)	1ea

* In P type, it may stick out from hand body. (P2 type is recommendable specification)

④ Output of Proximity Sensor

Name	Output
Blank	NPN type
PNP	PNP type

① Series

② Bore size & Stroke

Name	Bore size(mm)	Stroke(mm)
30S	30	8
40S	40	12
50S	50	14
60S	60	16
80S	80	20
100S	100	26
125S	125	32

⑤ Air Port specification

Blank	Basic type(side Air Port)
AP	Add Air Port under the floor

⑥ Center Pusher

Blank	Unequipped
CP	Center Pusher is equipped

* For detailed of center pusher specification, please refer to the drawings for each model.

Specification

Model	PH14-30S	PH14-40S	PH14-50S	PH14-60S	PH14-80S	PH14-100S	PH14-125S
Bore size(mm)	30	40	50	60	80	100	125
Stroke(mm)	8	12	14	16	20	26	32
Gripping force(kgf) Air pressure(5kgf/cm ²) Note 2)	Close	19.1	34.2	54.8	81.5	148	235
	Open	21.5	38.2	59.8	86.5	162	243
Air port size	M5	M5	M5	M5	PT1/8	PT1/8	PT1/8
Main body weight(kgf)	0.2	0.38	0.6	0.75	1.37	2.35	4.5
Allowable length of attachment L(mm)	40	50	60	80	100	120	140
Displacement of attachment H(mm) Note 3)							
Fluid	Clean air Note 1)						
Air pressure(kgf/cm ²)	3 ~ 7						
Lubrication	No need (if need, use one sort of turbine oil: SPEC ISOVG 32)						
Temperature(°C)	5 ~ 60						
Accuracy(mm)	±0.03				±0.08		
Max. Cycle Per Minute(C.P.M)	70				40		
Motion type	Double-acting type (Structure: Parallel open & close by Wedge Plunger) (Guide: Metal Guide)						
Tolerance of open & close stroke(mm)	Open: -0.5 ~ +1, Close: -1 ~ +0.5						

Note 1) Clean air: Fresh air containing solid matters with 0.3% of supersaturated moisture and 99.9% of liquid oil that passed through the 3-10 μ m degree of filtering

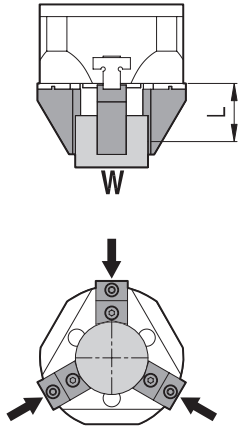
Note 2) The position of gripping point for gripping force is the end point of the Finger.

Note 3) For the base point of tolerable length and displacement in attachment, refer to page 48.(Tolerable value with 5kgf/cm² of Air pressure.)



▶ Refer to page 49 for how to read the graph.

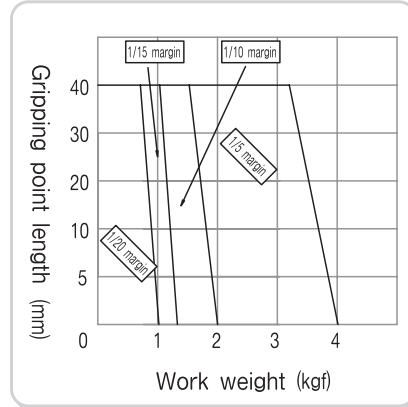
WORK outer diameter gripping force graph



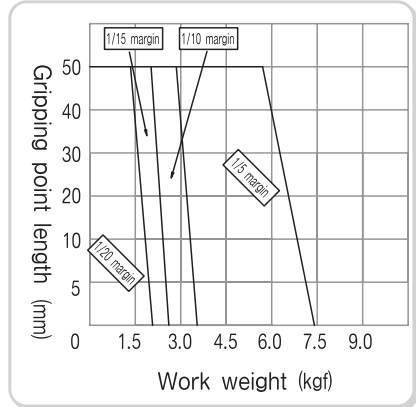
Outer diameter gripping state

W: Work weight
L: Gripping point length

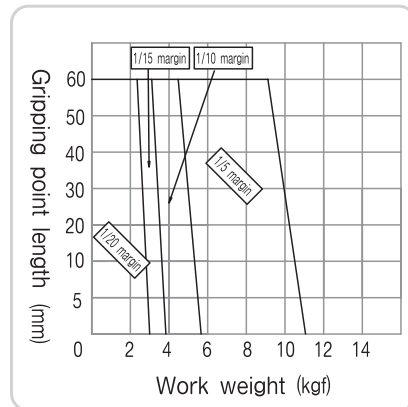
◆PH14-30S



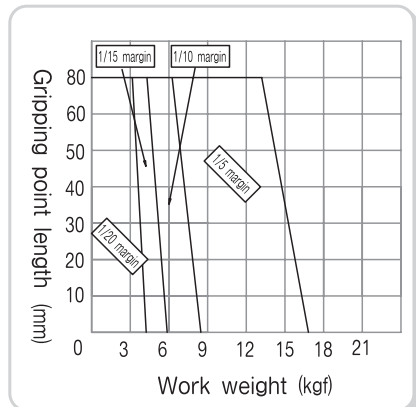
◆PH14-40S



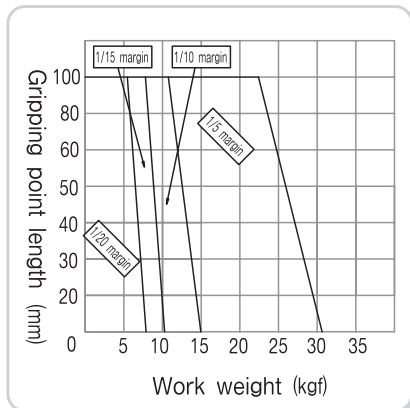
◆PH14-50S



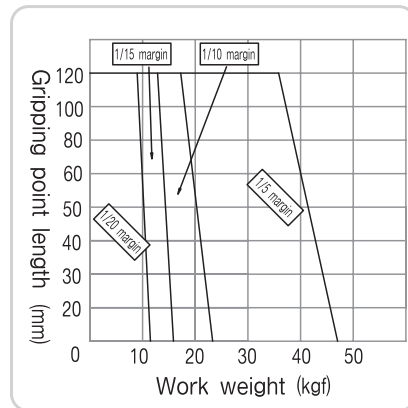
◆PH14-60S



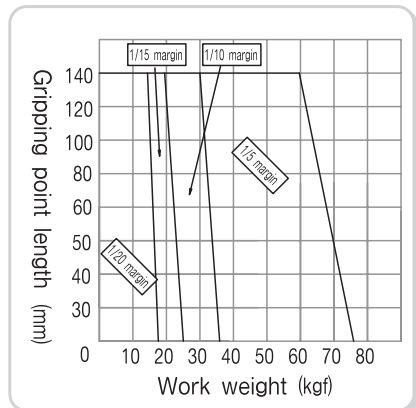
◆PH14-80S



◆PH14-100S



◆PH14-125S



HAND

- PH01-A
- PH01-D
- PH01-G
- PH01K
- PH01K-C
- PH02
- PH04
- PH05
- PH06
- PH06-L
- PH07
- PH08
- PH09
- PH12
- PH14-S**
- PH15-S
- PH21
- PH22
- PH23

⚠ Caution

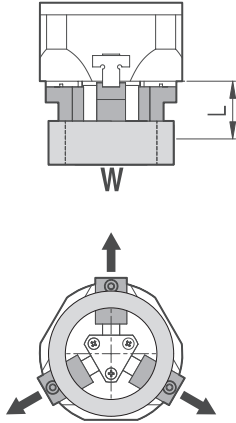
If using the attachment longer than allowable length as specified in the graph, it may have an adverse effect on the guide and cause problem to durability. Always use the gripping force within the specified length.



PH14-S Series

▶ Refer to page 49 for how to read the graph.

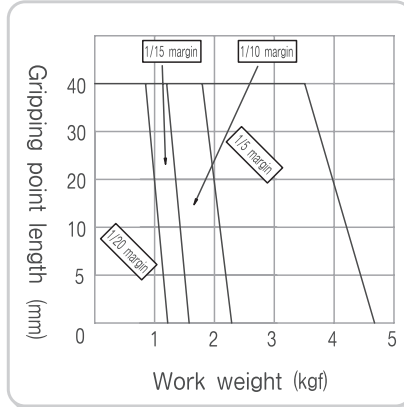
WORK inner diameter gripping force graph



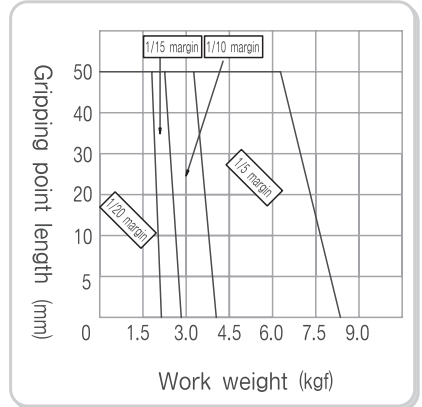
Inner diameter gripping state

W: Work weight
L : Gripping point length

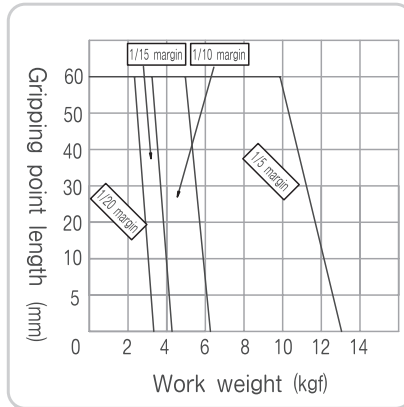
◆PH14-30S



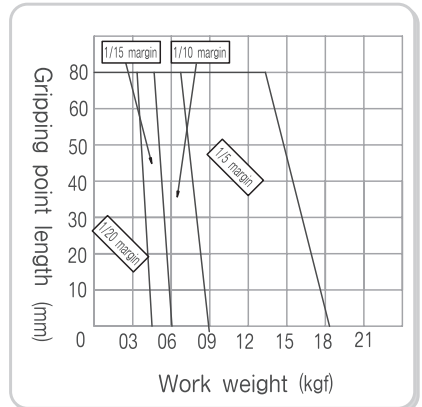
◆PH14-40S



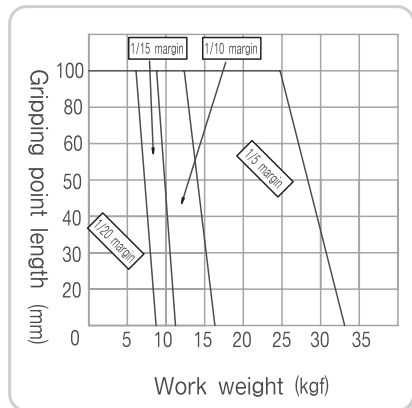
◆PH14-50S



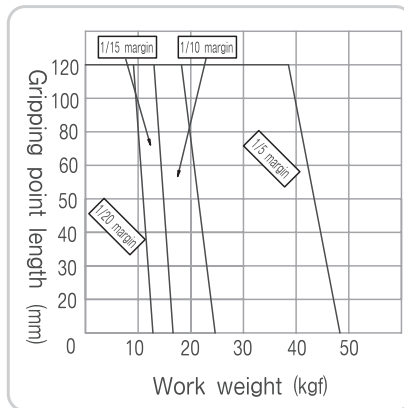
◆PH14-60S



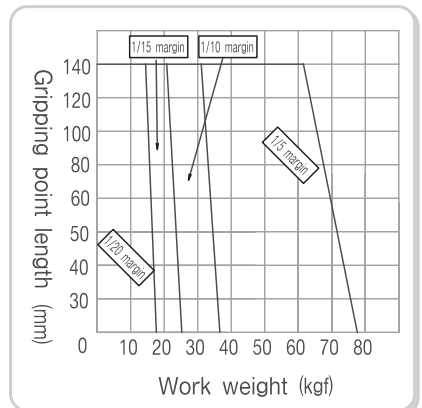
◆PH14-80S



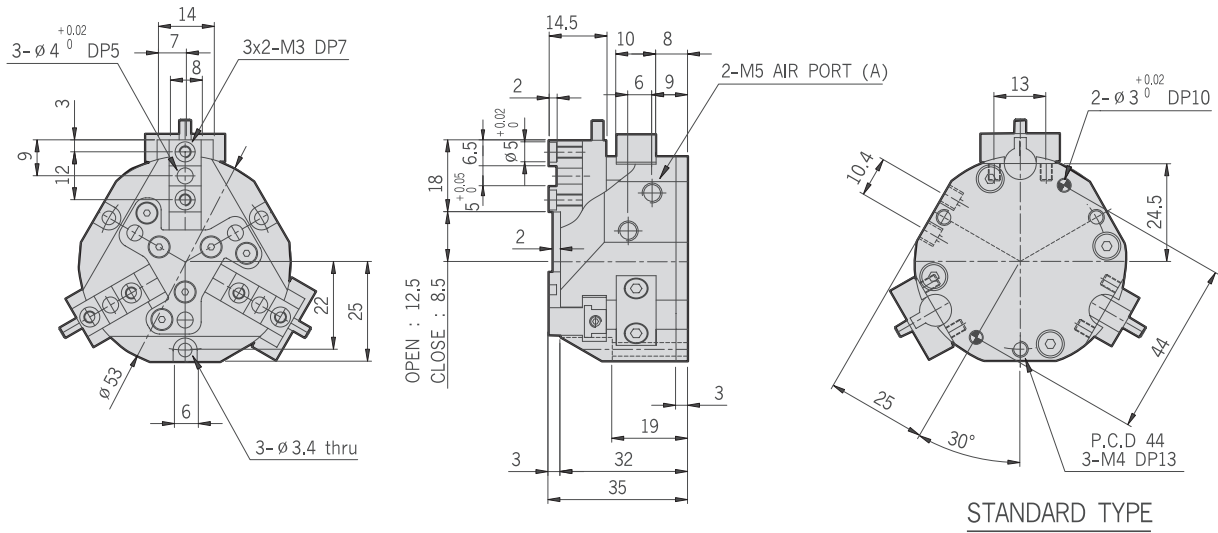
◆PH14-100S



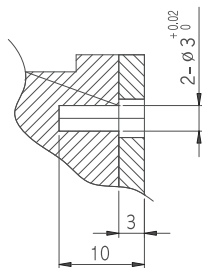
◆PH14-125S



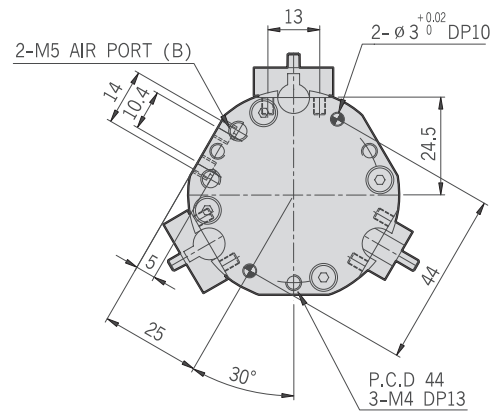
PH14-30S



STANDARD TYPE

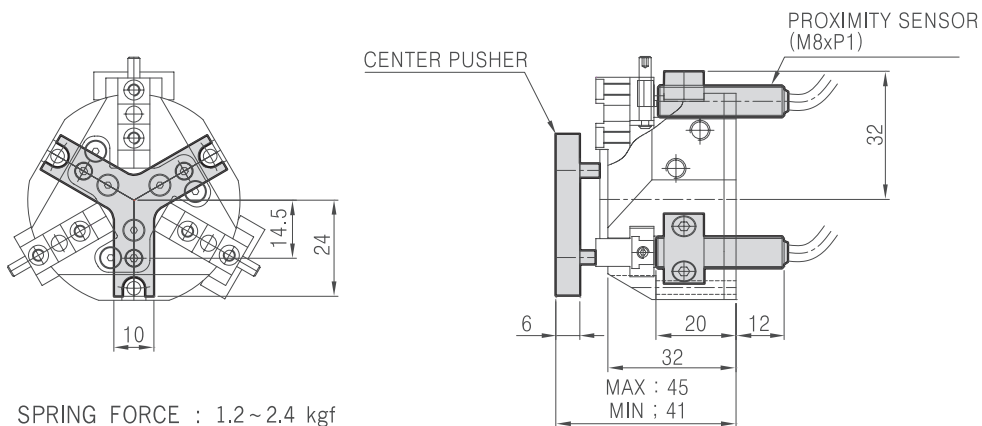


VIEW-A



AP TYPE

PH14-30S-Auto Switch & Center Pusher



SPRING FORCE : 1.2 ~ 2.4 kgf

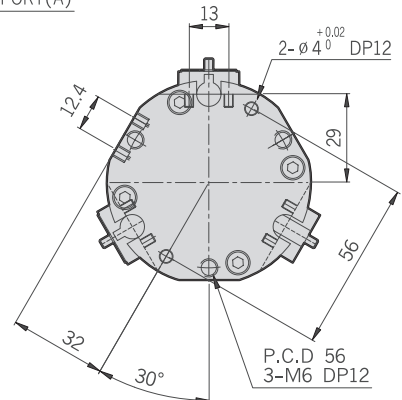
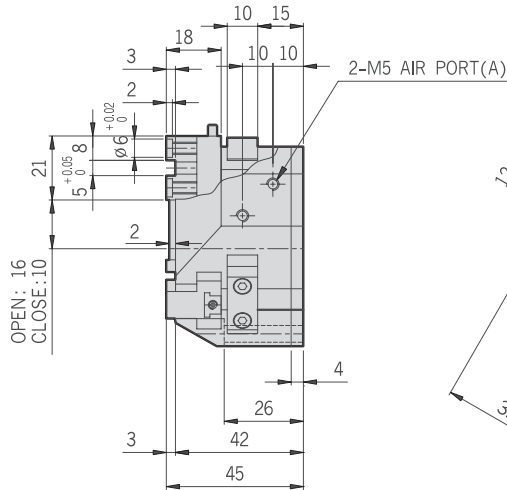
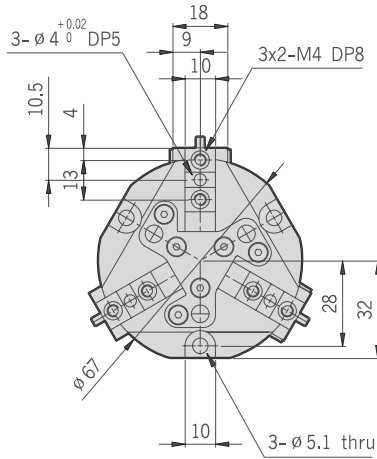
HAND

- PH01-A
- PH01-D
- PH01-G
- PH01K
- PH01K-C
- PH02
- PH04
- PH05
- PH06
- PH06-L
- PH07
- PH08
- PH09
- PH12
- PH14-S**
- PH15-S
- PH21
- PH22
- PH23

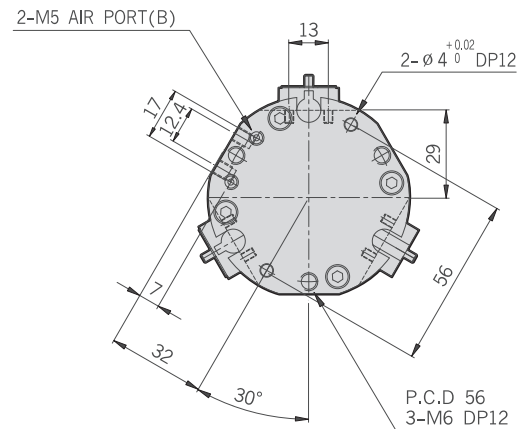
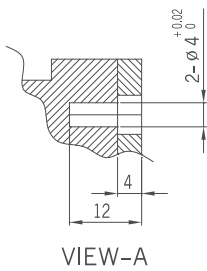
PH14-S Series

30S 40S 50S 60S 80S 100S 125S

PH14-40S

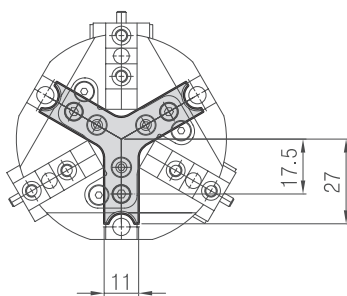


STANDARD TYPE

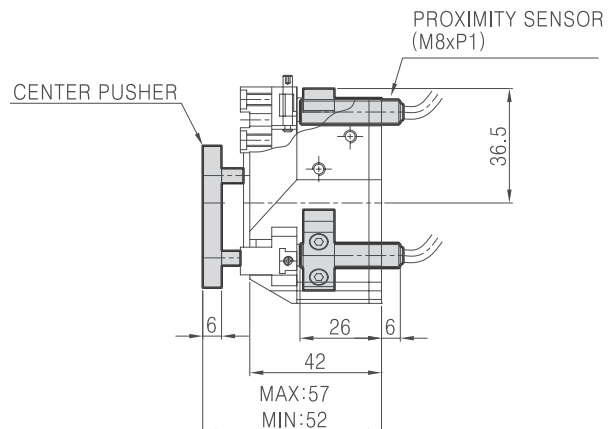


AP TYPE

PH14-40S-Auto Switch & Center Pusher



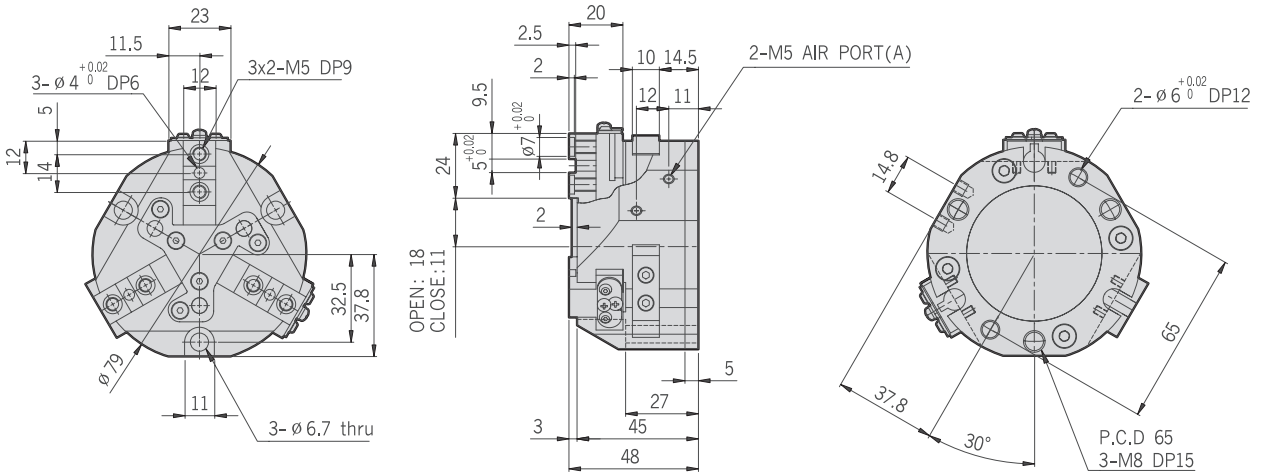
SPRING FORCE : 1.2 ~ 2.4 kgf



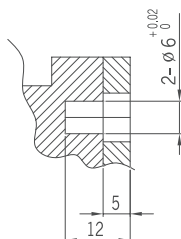
PH14-50S

HAND

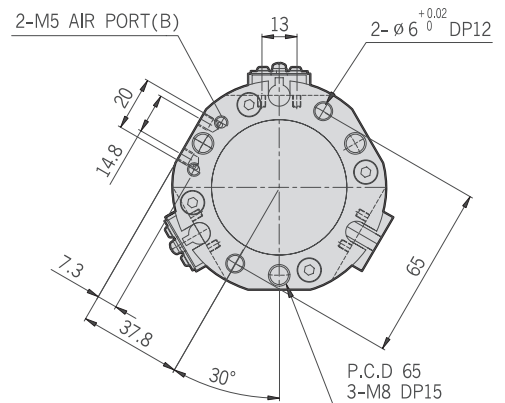
- PH01-A
- PH01-D
- PH01-G
- PH01K
- PH01K-C
- PH02
- PH04
- PH05
- PH06
- PH06-L
- PH07
- PH08
- PH09
- PH12
- PH14-S**
- PH15-S
- PH21
- PH22
- PH23



STANDARD TYPE

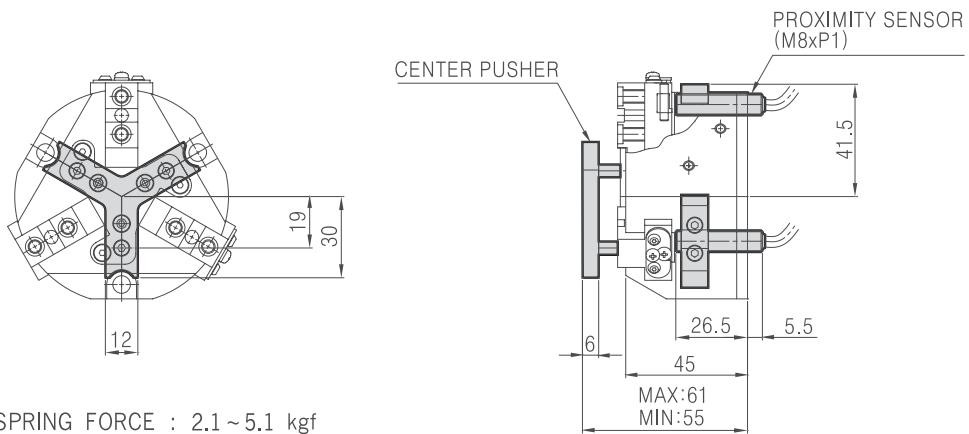


VIEW-A



AP TYPE

PH14-50S-Auto Switch & Center Pusher

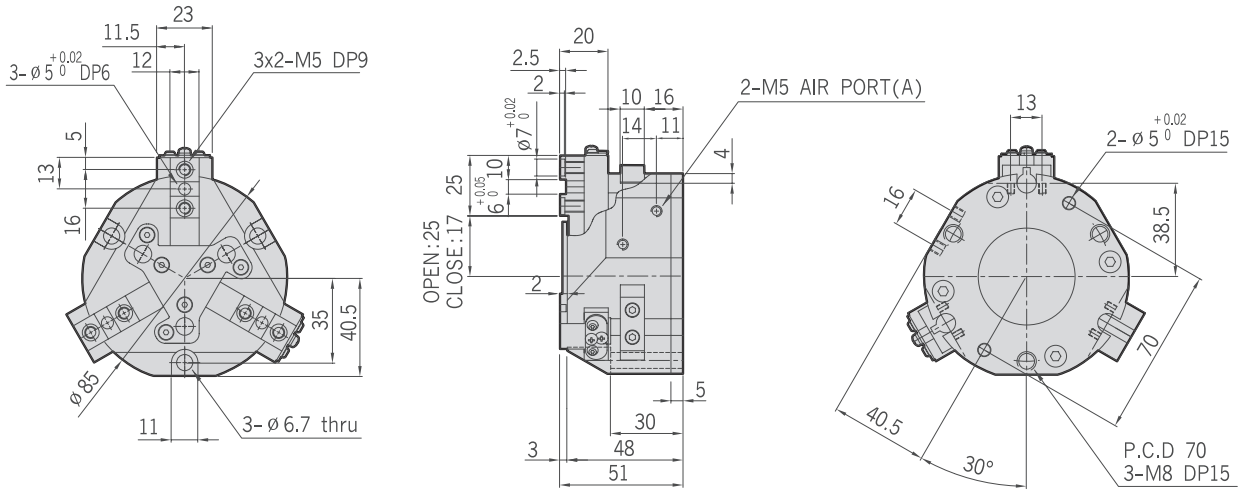


SPRING FORCE : 2.1 ~ 5.1 kgf

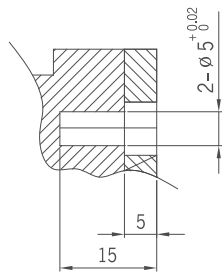
PH14-S Series

30S 40S 50S **60S** 80S 100S 125S

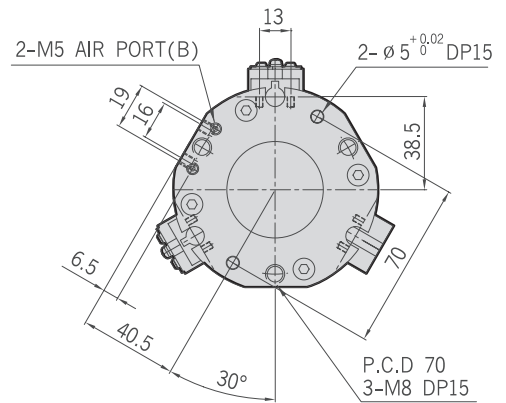
PH14-60S



STANDARD TYPE

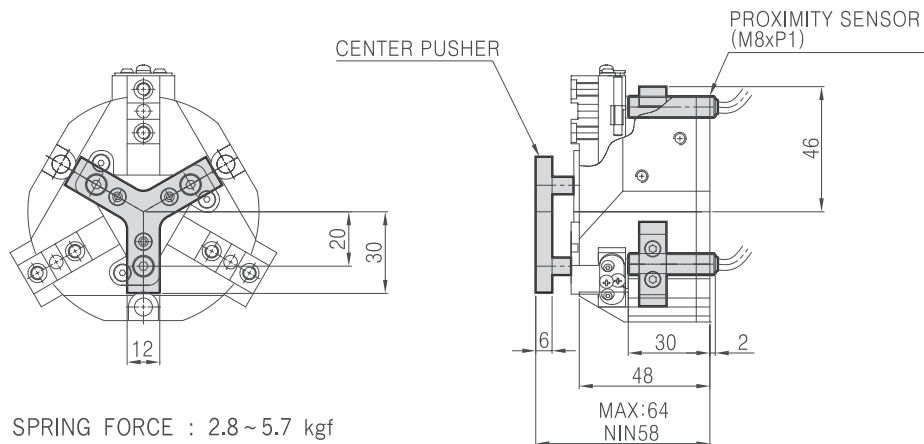


VIEW-A



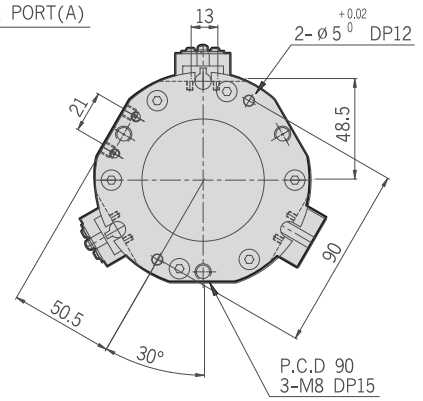
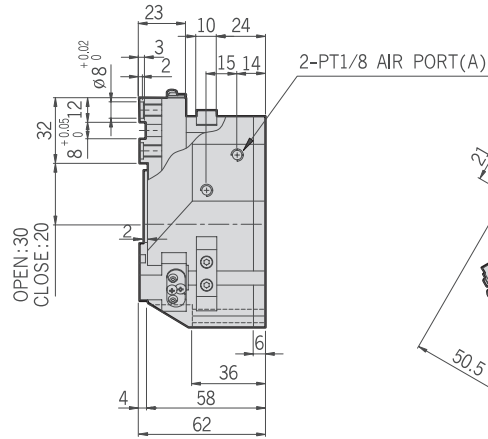
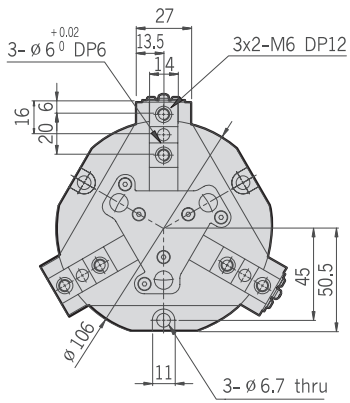
AP TYPE

PH14-60S-Auto Switch & Center Pusher

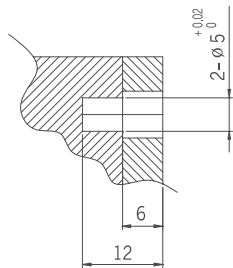


SPRING FORCE : 2.8~5.7 kgf

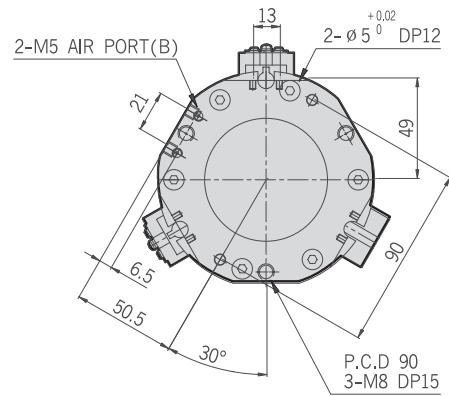
PH14-80S



STANDARD TYPE

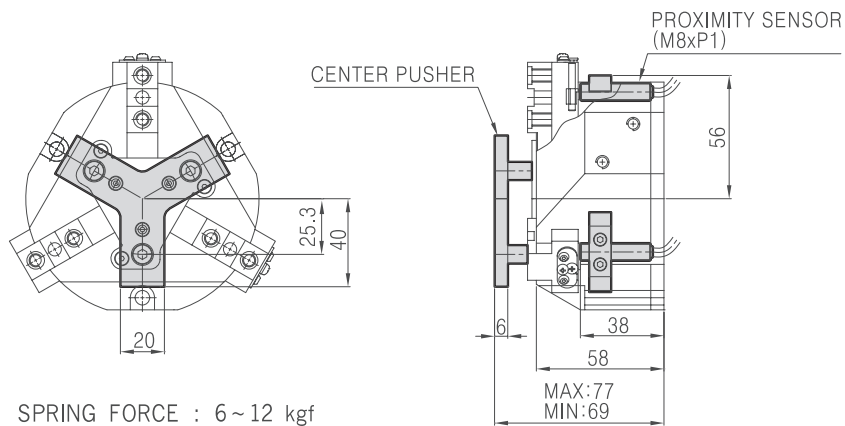


VIEW-A



AP TYPE

PH14-80S-Auto Switch & Center Pusher



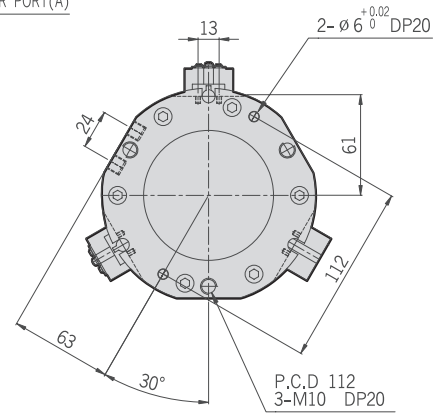
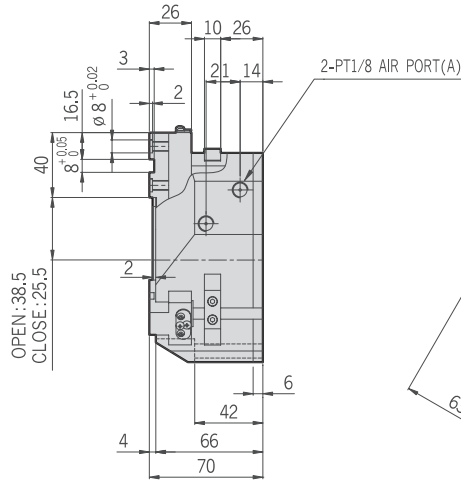
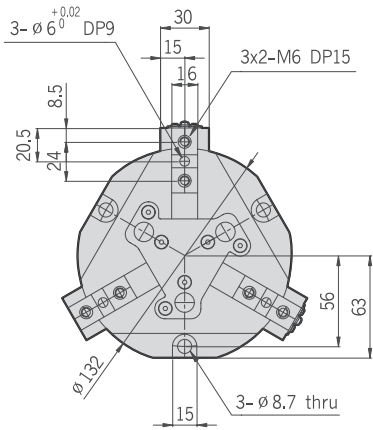
SPRING FORCE : 6 ~ 12 kgf

- PH01-A
- PH01-D
- PH01-G
- PH01K
- PH01K-C
- PH02
- PH04
- PH05
- PH06
- PH06-L
- PH07
- PH08
- PH09
- PH12
- PH14-S**
- PH15-S
- PH21
- PH22
- PH23

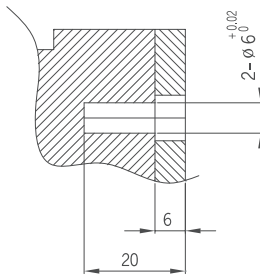
PH14-S Series

30S 40S 50S 60S 80S 100S 125S

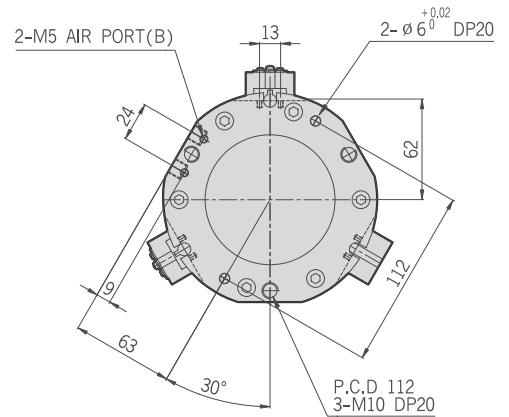
PH14-100S



STANDARD TYPE

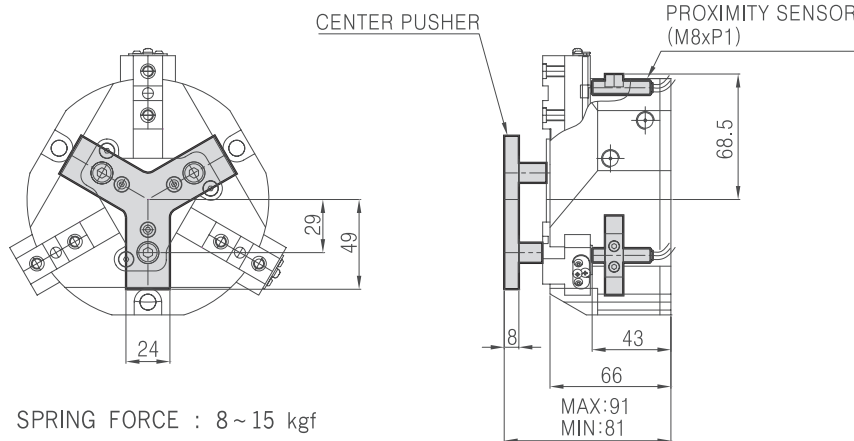


VIEW-A



AP TYPE

PH14-100S-Auto Switch & Center Pusher

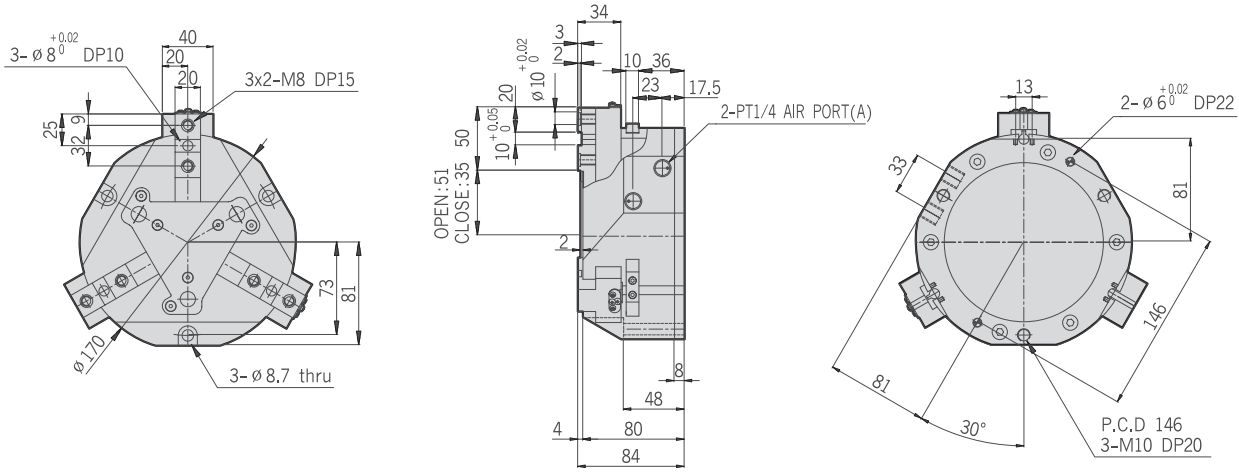


SPRING FORCE : 8 ~ 15 kgf

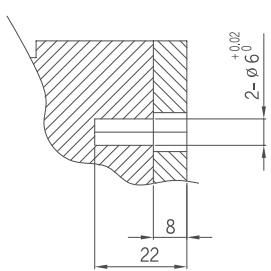
PH14-125S

HAND

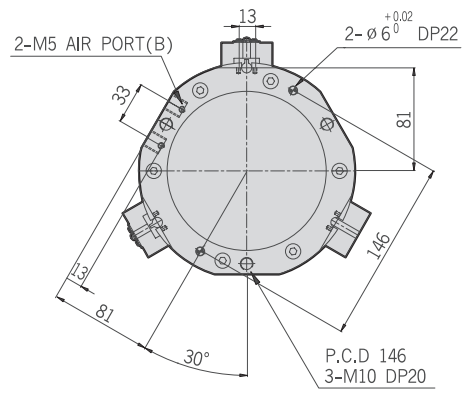
- PH01-A
- PH01-D
- PH01-G
- PH01K
- PH01K-C
- PH02
- PH04
- PH05
- PH06
- PH06-L
- PH07
- PH08
- PH09
- PH12
- PH14-S**
- PH15-S
- PH21
- PH22
- PH23



STANDARD TYPE

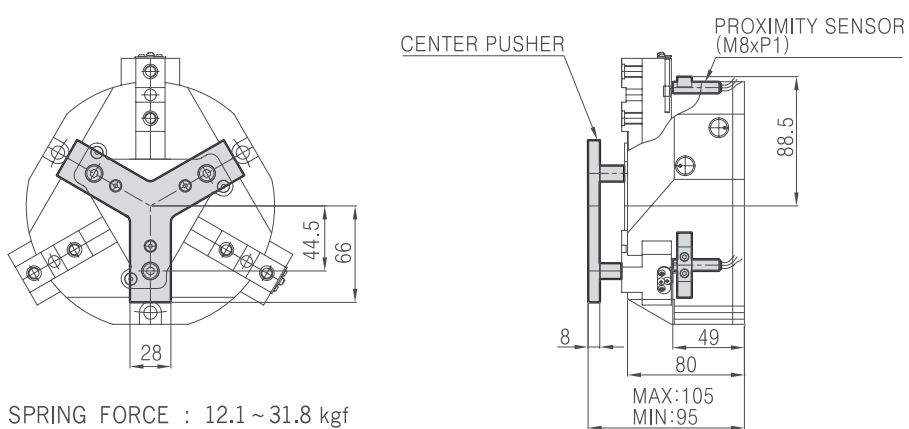


VIEW-A



AP TYPE

PH14-125S-Auto Switch & Center Pusher



SPRING FORCE : 12.1 ~ 31.8 kgf