

SWIVEL UNIT

ASU-SH Series

Features

NEW



- Rotary cylinder that double piston type by rack and pinion gear.
- Applicable to Auto Loader in CNC machine tool
- Easy wiring & piping process using hollow-hole
- Reversing combination unit possible to be attached 2 sets of general hand.
- Standardize mounted Shock Absorber
- Auto Switch for the detection of position can be attached

Order Form

ASU 16SH - W - P S - PNP

① ② ③ ④ ⑤ ⑥

④ Auto switch

Symbol	Switch type	Length
A3	DSC APC(2-wire)	1m
A3L		3m
P	3-wire proximity sensor(body Length 32mm)	2m
P2	3-wire proximity sensor(body Length 16mm)	2m

⑤ Auto Switch quantity

Blank	2ea
S	1ea

⑥ Output of Proximity Sensor

Name	Output
Blank	NPN type
PNP	PNP type

① Series

② Bore size

Name	Bore size(mm)
16SH	16
20SH	20
25SH	25
30SH	30
40SH	40

③ Assembly Bracket for Proximity sensor (P or P2)

Blank	None
W	Mount

* Sensor bracket is not necessary for using magnetic sensor (A3, A3L)

Specification

Model	ASU16SH	ASU20SH	ASU25SH	ASU30SH	ASU40SH
Bore size(mm)	16	20	25	30	40
Rotation angle(°)	180°				
Cushion specification	Shock Absorber				
Rotation time(sec)	0.4 ~ 1.5	0.4 ~ 1.5	0.4 ~ 1.8	0.5 ~ 2.0	0.7 ~ 2.0
Effective torque(kgf · cm) P:Allowable air pressure(kgf/cm ²)	2.5×P	4.8×P	8.2×P	14.8×P	31.7×P
Maximum radial load(kgf)	22	22	48	35	46
Maximum thrust load(kgf)	8.6	8.4	16	17	20
Allowable energy(kgf · cm)	3.8	7	9	32	72
Air port size	M5	M5	PT 1/8	PT 1/8	PT 1/8
Fluid	Clean air Note 1)				
Air pressure(kgf/cm ²)	3 ~ 7				
Lubrication	No need (if need, use one sort of turbine oil: SPEC ISOVG 32)				
Temperature(°C)	5 ~ 60				
Shock Absorber specification	M12×P1	M12×P1	M14×P1.5	M20×P1.5	M25×P1.5
Main body weight(kgf)	1	1.9	2.8	3.2	5.7

Note 1) Clean air: Fresh air containing solid matters with 0.3% of supersaturated moisture and 99.9% of liquid oil that passed through the 3~10 μ m degree of filtering

16

20

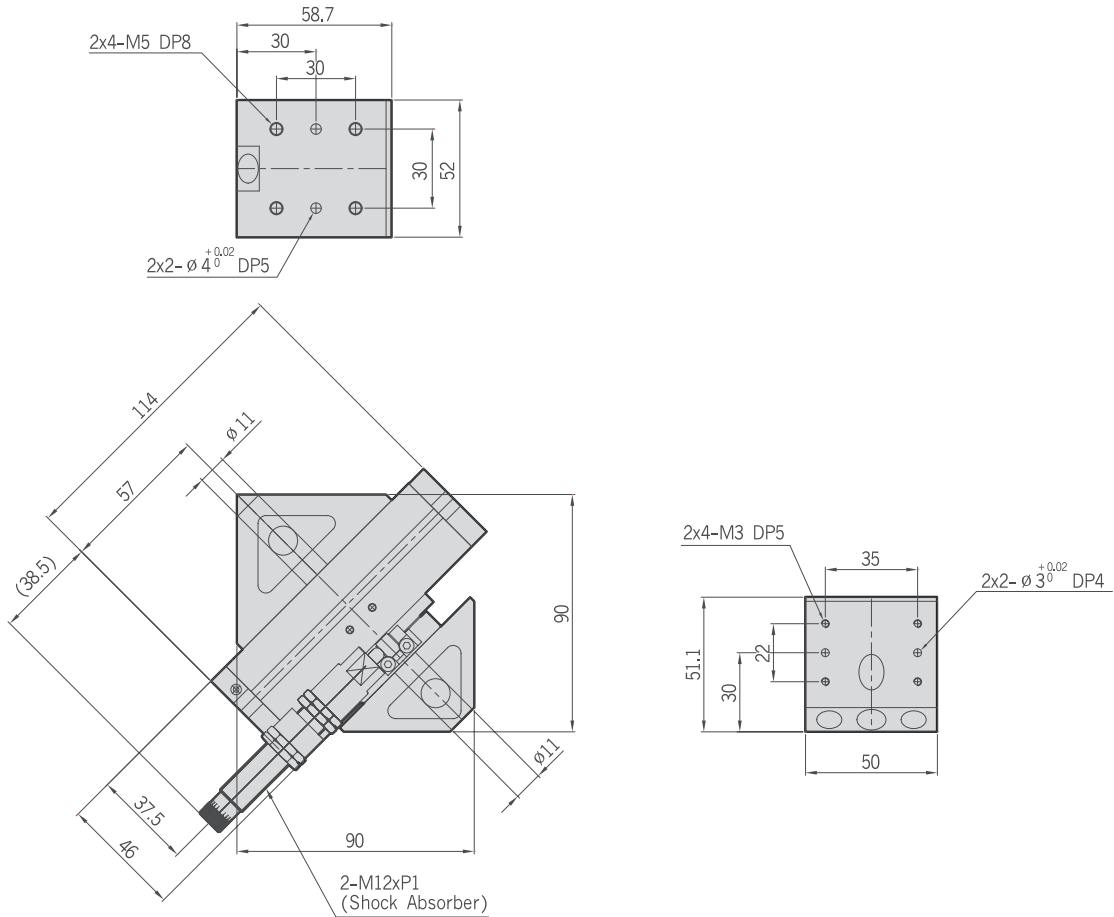
25

30

40

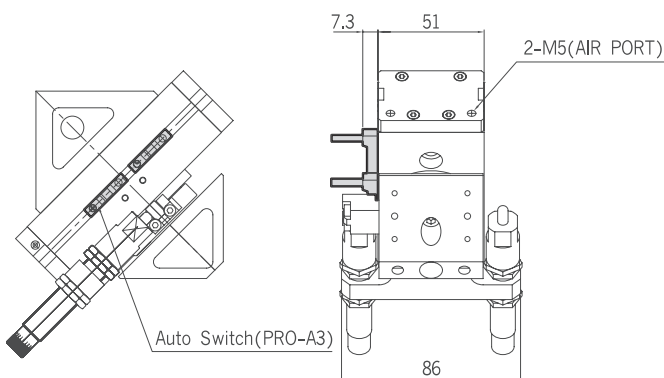
SWIVEL UNIT /
ROTARY JOINT
ASU-SH
ASU-G
ASU-N
MODULE
PRJ

ASU16SH

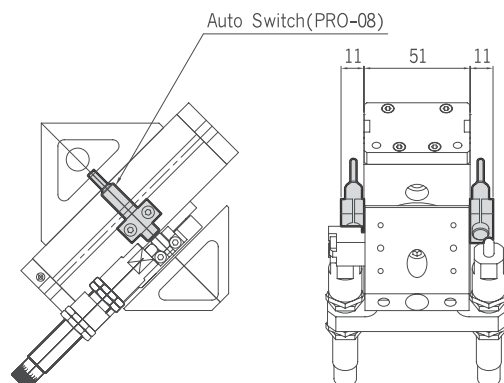


ASU16SH-Auto Switch

1. MAGNETIC SENSOR



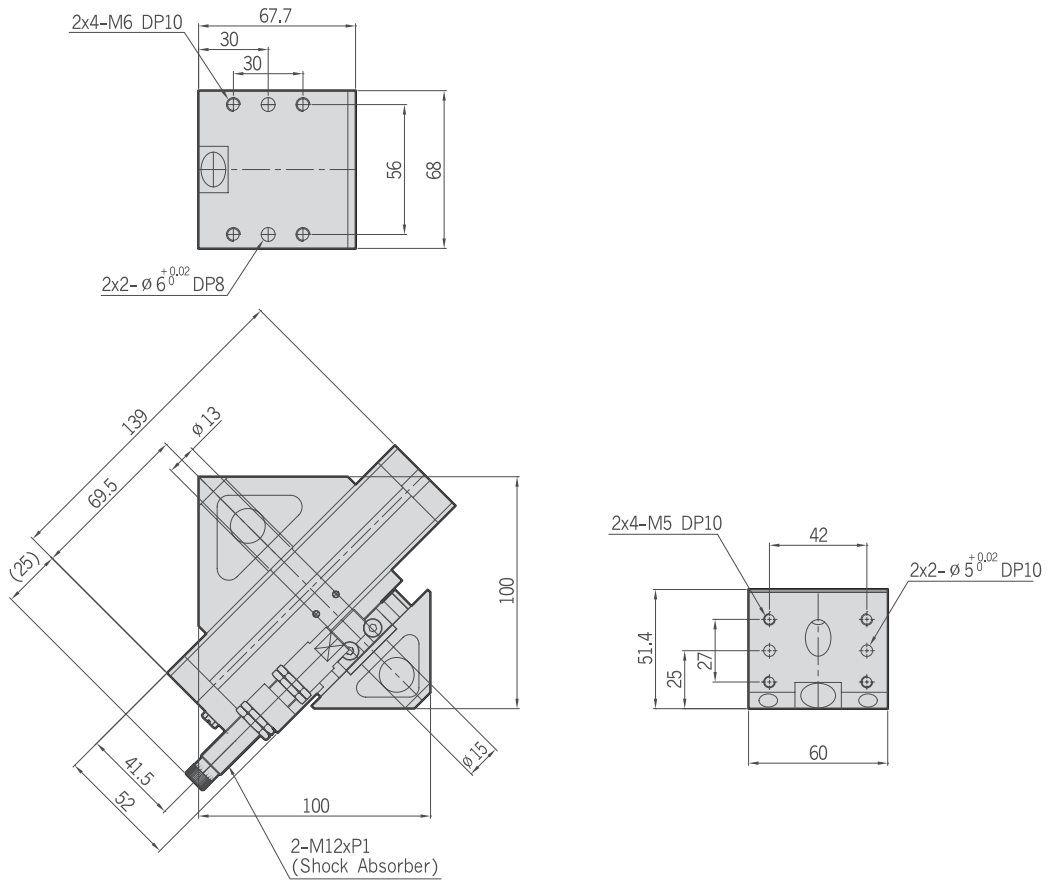
2. PROXIMITY SENSOR



ASU-SH Series

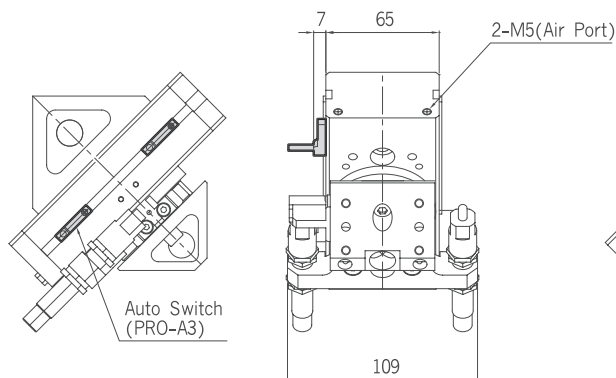
16 20 25 30 40

ASU20SH

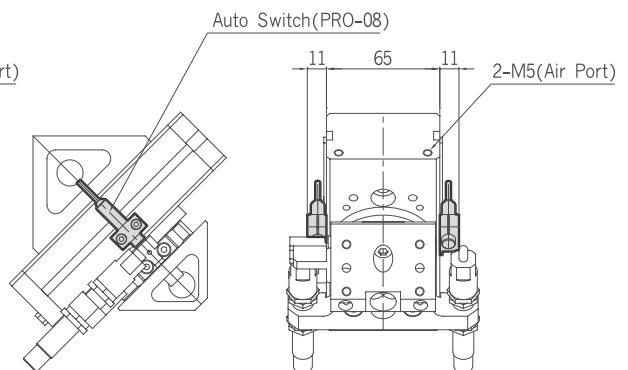


ASU20SH-Auto Switch

1. MAGNETIC SENSOR

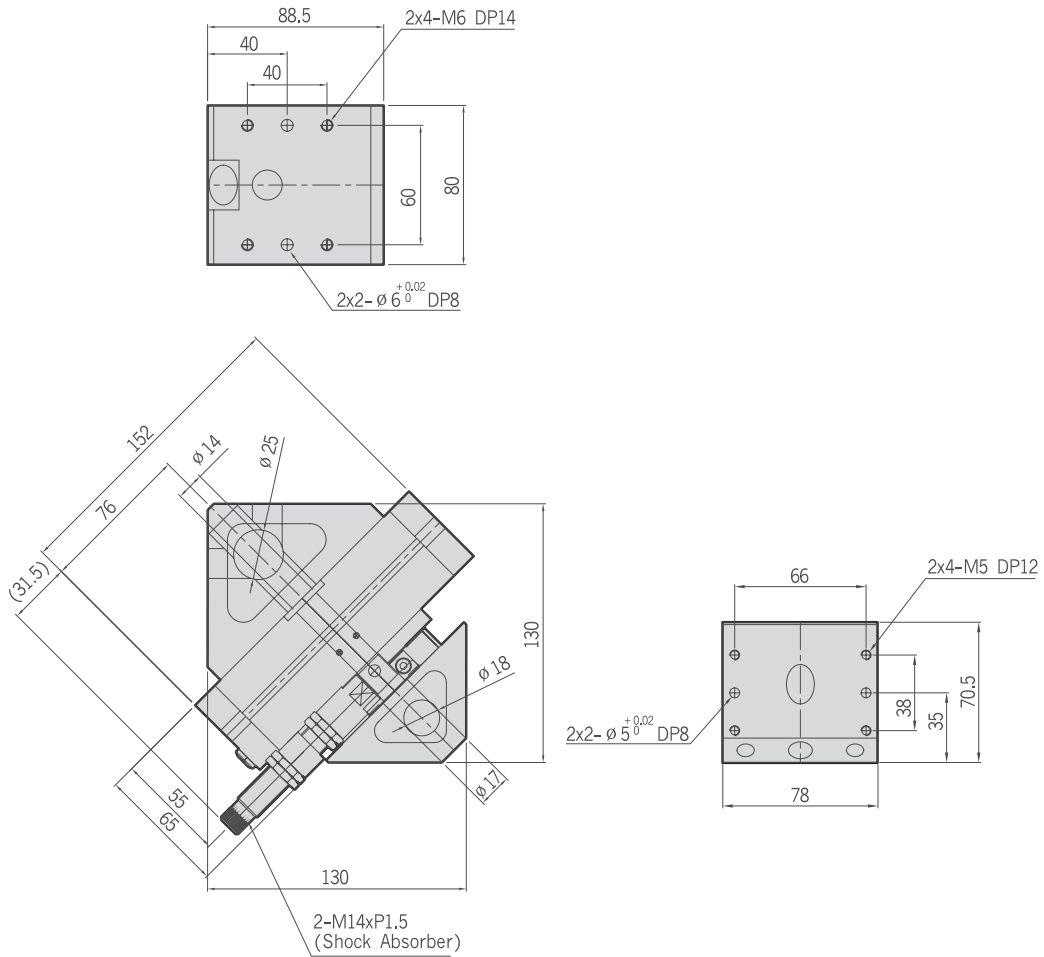


2. PROXIMITY SENSOR



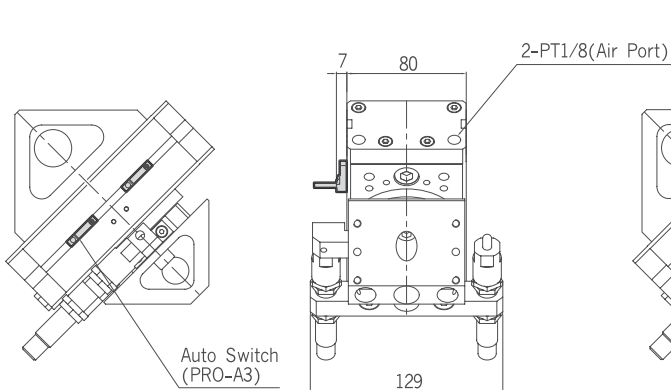
16 20 25 30 40

ASU25SH

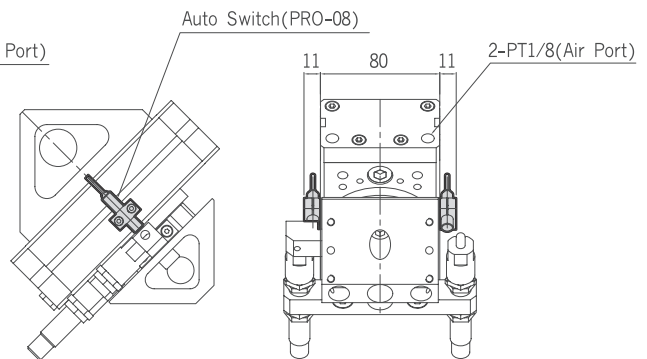


ASU25SH-Auto Switch

1. MAGNETIC SENSOR



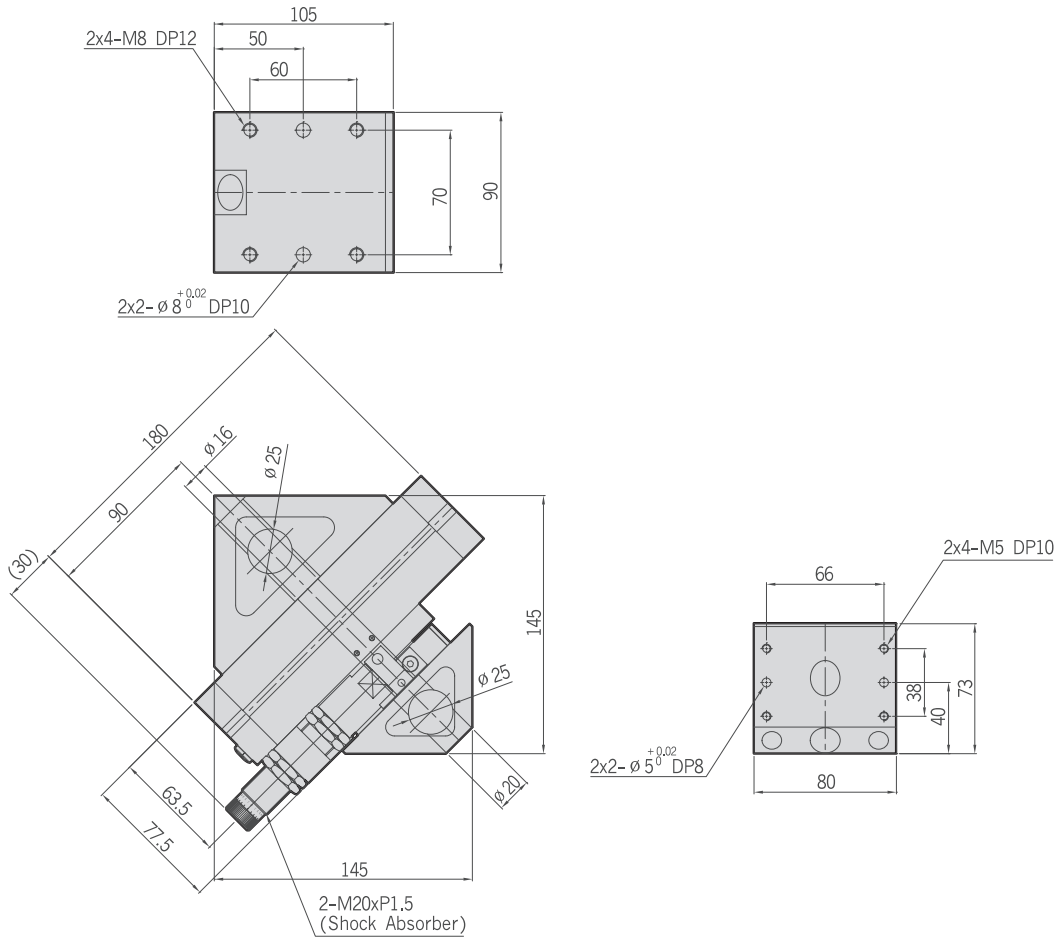
2. PROXIMITY SENSOR



ASU-SH Series

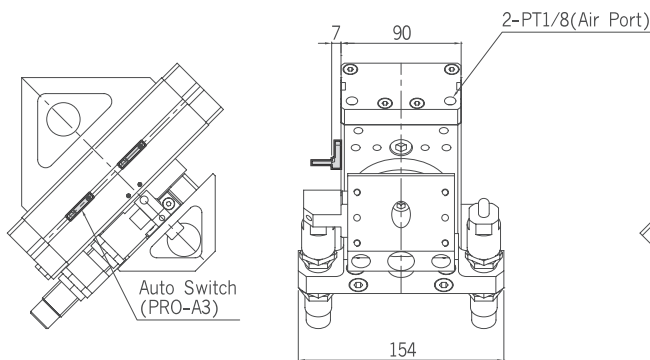
16 20 25 **30** 40

ASU30SH

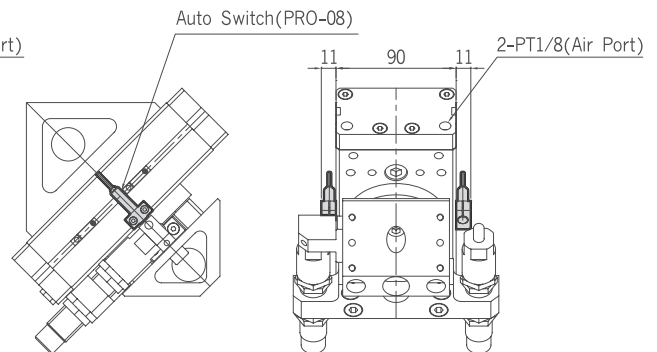


ASU30SH-Auto Switch

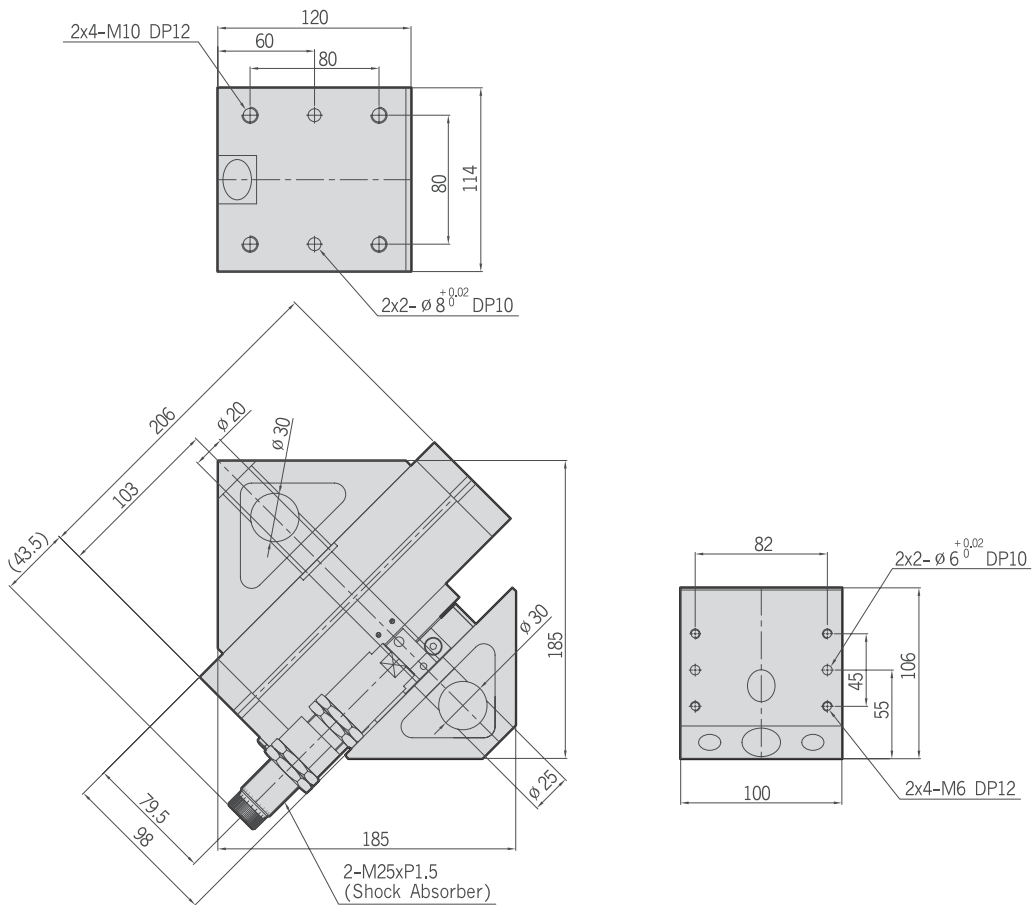
1. MAGNETIC SENSOR



2. PROXIMITY SENSOR

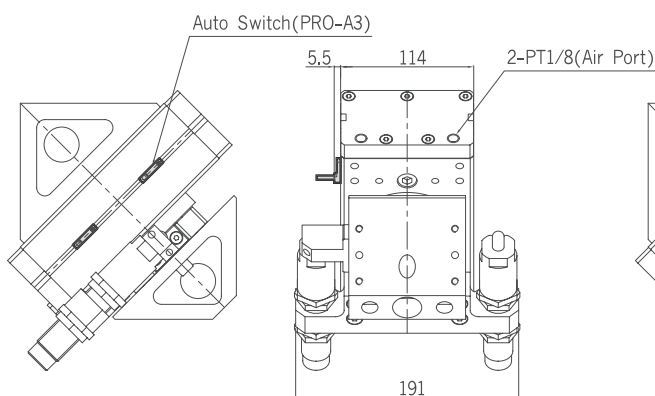


ASU40SH



ASU40SH-Auto Switch

1. MAGNETIC SENSOR



2. PROXIMITY SENSOR

